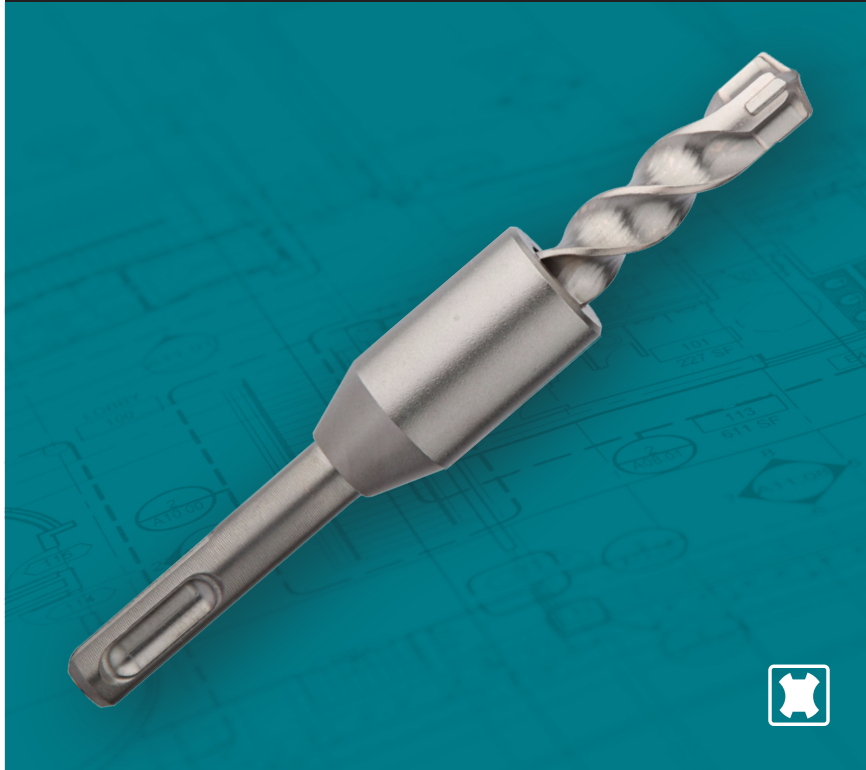


# SDS-PLUS 3-CUTTER STOP BITS



## NEW ACCESSORY OVERVIEW

### FEATURES

- Steel stop collar prevents over-drilling for precise anchor installations such as for drop-in anchor systems
- 3-cutter bit tip is engineered for a more accurate hole and longer life
- Centering tip features a more aggressive design for faster hole starting
- Central guiding action engineered for more accurate holes
- Aggressive head geometry in primary cutter engineered for use in concrete
- For use with Rotary Hammers that accept SDS-PLUS shank bits

### PRODUCT HIGHLIGHTS



#### PRECISION

Steel stop collar prevents over-drilling for precise anchor installations



#### ACCURACY

3-cutter bit tip is engineered for a more accurate hole and longer life

PART NO.	ITEM	DIAMETER	USABLE LENGTH	OVERALL LENGTH	UPC
B-68650	SDS-PLUS 3-Cutter Stop Bit	3/8"	1-1/16"	4"	088381-547215
B-68666	SDS-PLUS 3-Cutter Stop Bit	1/2"	13/16"	4"	088381-547222
B-68672	SDS-PLUS 3-Cutter Stop Bit	1/2"	1-9/16"	5"	088381-547239
B-68688	SDS-PLUS 3-Cutter Stop Bit	1/2"	1-11/16"	5"	088381-547246
B-68694	SDS-PLUS 3-Cutter Stop Bit	5/8"	1-1/16"	5"	088381-547253
B-68703	SDS-PLUS 3-Cutter Stop Bit	5/8"	2-1/16"	6"	088381-547260
RECOMMENDED PART NO.	DROP-IN ANCHOR DIAMETER SIZE	DROP-IN ANCHOR LENGTH	RECOMMENDED STOP BIT SIZE	STOP BIT USABLE LENGTH	UPC
B-68650	1/4"	1"	3/8"	1-1/16"	088381-547215
B-68666	3/8"	3/4"	1/2"	13/16"	088381-547222
B-68672	3/8"	1-9/16"	1/2"	1-9/16"	088381-547239
B-68688	3/8"	1-5/8"	1/2"	1-11/16"	088381-547246
B-68694	1/2"	1"	5/8"	1-1/16"	088381-547253
B-68703	1/2"	2"	5/8"	2-1/16"	088381-547260