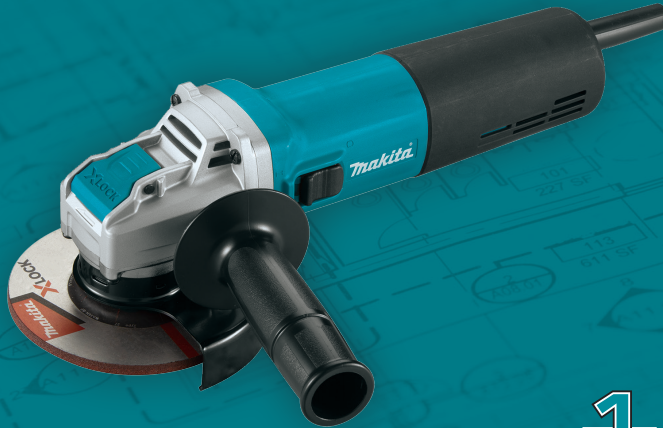


5" X-LOCK HIGH-POWER ANGLE GRINDER, WITH SJS™



NEW TOOL OVERVIEW GA5080

X-LOCK



FEATURES

- X-LOCK quick change system allows for tool-free wheel changes with an easy snap-on mounting and fast change-outs by simply pulling a release lever
- Constant speed control automatically applies additional power to the motor to maintain speed under load
- Soft start suppresses start-up reaction for smooth start-ups and longer gear life
- Electronic current limiter helps protect the motor from overload
- Slide switch with lock-on setting for continuous use
- Gear housing cover with labyrinth construction seals the drive gear and bearings from dust and debris for increased durability
- Zig-zag epoxy applied to the armature coils is designed to protect from harmful debris while maintaining proper heat dissipation for longer life

SPECIFICATIONS

Wheel Diameter	5"
AMPS	13
No Load Speed (variable speed)	12,000 RPM
Spindle Type	X-LOCK
Lock-On Switch	Yes
Lock-Off Switch	No
Switch Type	Body grip/slide
Variable speed dial	No
Overall Length	12-1/8"
Net Weight	6 lbs.
UPC Code	088381-745642

PRODUCT HIGHLIGHTS



INNOVATION

X-LOCK quick change system allows for easy tool-free wheel changes



POWER

Powerful 13 AMP motor delivers more output



DURABILITY

SJS™ technology is a mechanical clutch system that helps prevent motor and gear damage



CONVENIENCE

Quick guard rotation allows easy tool-less adjustment for increased productivity

STANDARD EQUIPMENT

- X-LOCK 5" x 1/4" x 7/8" Metal & Stainless Grinding Wheel, 36 Grit (E-00468)
- 5" Tool-Less Wheel Guard (140T26-1)
- Side Handle (153489-2)

RELATED PRODUCTS

1. 5" Clip-On Cut-Off Wheel Guard Cover (199710-5)
2. X-LOCK 5" x .045" x 7/8" Metal & Stainless Thin Cut-Off Wheel, 60 Grit (E-00474)
3. X-LOCK 5" x 1/4" x 7/8" Metal & Stainless Grinding Wheel, 36 Grit (E-00468)
4. X-LOCK 5" x 1/4" x 7/8" General Purpose Metal Grinding Wheel, 36 Grit (E-00452)
5. X-LOCK 5" Turbo Rim Diamond Blade (E-07244)

