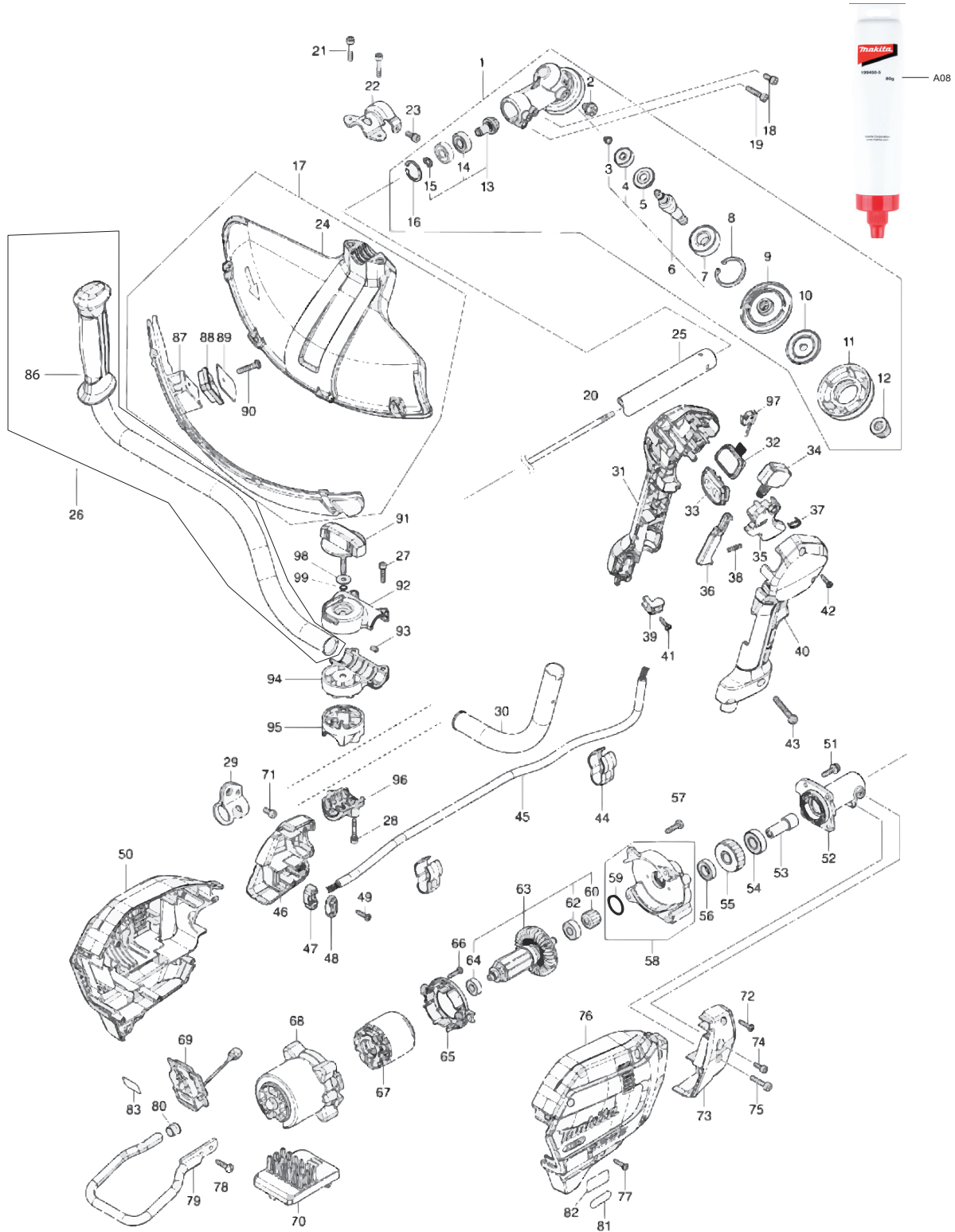




GRU02



Products with multiple versions are listed in subsiding order with the newest version on top not indented.

Section	Fig. No.	Part No.	Description	GRU02	Tech Bulletin	Notes
1	1	123853-1	GEAR CASE ASSEMBLY		1	INC. 2,6,8-13,16
1	2	265590-2	HEX.BOLT M8X10 WITH R		1	
1	3	232350-7	RING SPRING 6		1	
1	4	210030-5	BALL BEARING 627ZZ		1	
1	5	221484-1	SPIRAL BEVEL GEAR 19		1	
1	6	136233-2	CUTTER SHAFT ASS'Y		1	INC. 3-5,7
1	7	211228-7	BALL BEARING 6202DDW		1	
1	8	257432-4	RETAINING RING R-35		1	
1	9	144312-2	RECEIVE WASHER COMPLETE		1	
1	10	347104-0	CLAMP WASHER		1	
1	11	457274-8	CUP US		1	
1	12	252236-9	HEX. LOCK NUT M10-17		1	
1	13	136235-8	SPIRAL BEVEL GEAR ASS'Y		1	INC. 14,15
1	14	210051-7	BALL BEARING 609LLb		2	
1	14	210049-4	BALL BEARING 609ZZ		2	
1	15	257986-1	RETAINING RING (EXT) S-9		1	
1	16	257987-9	RETAINING RING (INT)R-24		1	
1	17	191B54-1	PROTECTOR U 430 SET MG		1	INC. 24,87-90
1	18	922216-6	HEX. SOCKET HEAD BOLT M5X14		1	
1	19	922242-5	HEX. SOCKET HEAD BOLT M5X25		1	
1	20	327056-1	SHAFT		1	
1	21	251513-6	H.S.H.BOLT M5X25		2	
1	22	347107-4	PROTECTOR CLAMP 24		1	
1	23	922216-6	HEX. SOCKET HEAD BOLT M5X14		1	
1	24	457271-4	PROTECTOR U 450		1	
1	25	140P08-9	SHAFT PIPE COMPLETE F		1	
1	26	141D27-6	HANDLE 22L COMPLETE		1	INC. 86
1	27	922241-7	HEX. SOCKET HEAD BOLT M5X25		2	
1	28	922251-4	HEX. SOCKET HEAD BOLT M5X30		2	
1	29	347116-3	HANGER		1	
1	30	327837-3	HANDLE 22 R		1	
1	31	183T68-2	GRIP SET		1	INC. 40
1		252180-0	HEX. LOCK NUT M5-8		1	INC WITH FIG 31/NOT PICTURED
1	32	141D26-8	INDICATION CIRCUIT COMPLETE G		1	

Products with multiple versions are listed in subsiding order with the newest version on top not indented.

Section	Fig. No.	Part No.	Description	GRU02	Tech Bulletin	Notes
1	33	140W06-5	SWITCH CIRCUIT COMPLETE G	1		
1		819J26-9	SWITCH LABEL	1		INC WITH FIG 33/NOT PICTURED
1	34	651492-2	SWITCH C3JR-1A-PAXD3	1		
1	35	459145-5	SWITCH LEVER	1		
1	36	459146-3	LOCK OFF LEVER	1		
1	37	233540-5	TORSION SPRING 11	1		
1	38	233101-1	COMPRESSION SPRING 4	1		
1	39	687260-7	STRAIN RELIEF	1		
1	40	183T68-2	GRIP SET	1		INC. 31
1		252180-0	HEX. LOCK NUT M5-8	1		INC WITH FIG 40/NOT PICTURED
1	41	266326-2	TAPPING SCREW 4X18	1		
1	42	266326-2	TAPPING SCREW 4X18	5		
1	43	911258-5	PAN HEAD SCREW M5X35	1		
1	44	457458-8	CLAMP	2		
1	45	699166-7	POWER SUPPLY CORD UNIT	1		
1	46	183N25-4	HOUSING COVER SET	1		INC. 73
1	47	687051-6	STRAIN RELIEF	1		
1	48	687124-5	STRAIN RELIEF	1		
1	49	266326-2	TAPPING SCREW 4X18	2		
1	50	183S87-2	HOUSING SET	1		INC. 76
1		263005-3	RUBBER PIN 6	2		INC WITH FIG 50/NOT PICTURED
1	51	911233-1	PAN HEAD SCREW M5X20	4		
1	52	140Y38-4	PIPE BRACKET COMPLETE	1		
1		263002-9	RUBBER PIN 4	1		INC WITH FIG 52/NOT PICTURED
1	53	325811-5	SPINDLE HUB	1		
1	54	211131-2	BALL BEARING 6001DDW	1		
1	55	227848-7	HELICAL GEAR 33	1		
1	56	211140-1	BALL BEARING 6901LLB	1		
1	56	211150-8	BALL BEARING 6901ZZ	1		
1	57	266420-0	TAPPING SCREW 5X20	4		
1	58	136368-9	GEAR BOX ASSY	1		INC. 59
1	59	213961-7	O RING 22	1		
1	60	227834-8	HELICAL GEAR 16	1		
1	62	210005-4	BALL BEARING 608DDW	1		

Products with multiple versions are listed in subsiding order with the newest version on top not indented.

Section	Fig. No.	Part No.	Description	GRU02	Tech Bulletin	Notes
1	63	519647-4	ROTOR ASS'Y	1		INC. 60,62,64
1	64	211021-9	BALL BEARING 607LLB	1		
1	64	210062-2	BALL BEARING 607ZZ	1		
1	65	459764-7	BAFFLE PLATE	1		
1	66	266326-2	TAPPING SCREW 4X18	2		
1	67	629A25-7	STATOR	1		
1	68	412961-6	MOTOR HOUSING	1		
1	69	632P49-4	TERMINAL UNIT	1		
1	70	620F25-0	CONTROLLER	1		
1	71	922212-4	HEX. SOCKET HEAD BOLT M5X12	1		
1	72	266326-2	TAPPING SCREW 4X18	2		
1	73	183N25-4	HOUSING COVER SET	1		INC. 46
1	74	922211-6	H.S.H.BOLT M5X12 WITH W	1		
1	75	922233-6	H.S.H.BOLT M5X20 WITH WR	1		
1	76	183S87-2	HOUSING SET	1		INC. 50
1		263005-3	RUBBER PIN 6	2		INC WITH FIG 76/NOT PICTURED
1	77	266326-2	TAPPING SCREW 4X18	6		
1	78	266420-0	TAPPING SCREW 5X20	2		
1	79	347752-5	BATTERY GUARD	1		
1	80	422230-7	CAP	1		
1	86	273014-4	GRIP 36	1		INC WITH FIG 26
1	87	144316-4	PROTECTOR U EXT. 420-450 COMP	1		
1		346696-6	HOOK	2		INC WITH FIG 87/NOT PICTURED
1		232284-4	LEAF SPRING	2		INC WITH FIG 87/NOT PICTURED
1	88	459765-5	CUTTER EXTENSION	1		
1	89	347115-5	CUTTER	1		
1	90	266459-3	TAPPING SCREW 5X25	1		
1	91	162965-5	KNOB 57	1		
1	92	141D24-2	UPPER HANDLE HOLDER 22 COMP	1		
1		263005-3	RUBBER PIN 6	1		INC WITH FIG 92/NOT PICTURED
1	93	263005-3	RUBBER PIN 6	2		
1	94	312B68-9	LOWER HANDLE HOLDER 22	1		
1	95	312B65-5	UPPER PIPE HOLDER 24	1		
1	96	312B66-3	LOWER PIPE HOLDER 24	1		

Products with multiple versions are listed in subsiding order with the newest version on top not indented.

Section	Fig. No.	Part No.	Description	GRU02	Tech Bulletin	Notes
1	97	632G61-0	SWITCH UNIT	1		
1	98	253047-5	FLAT WASHER 6	1		
1	99	213960-9	O RING 5	1		
1	A01	122A37-4	BAND ASSEMBLY	1		NOT PICTURED
1	A05	D-74859	STAR BLADE 230X4TX25.4	1		NOT PICTURED
1	A06	782238-6	BOX WRENCH 17	1		NOT PICTURED
1	A07	783202-0	HEX. WRENCH 4	1		NOT PICTURED
1	A08	199450-5	STRING TRIMMER GEAR GREASE	1		