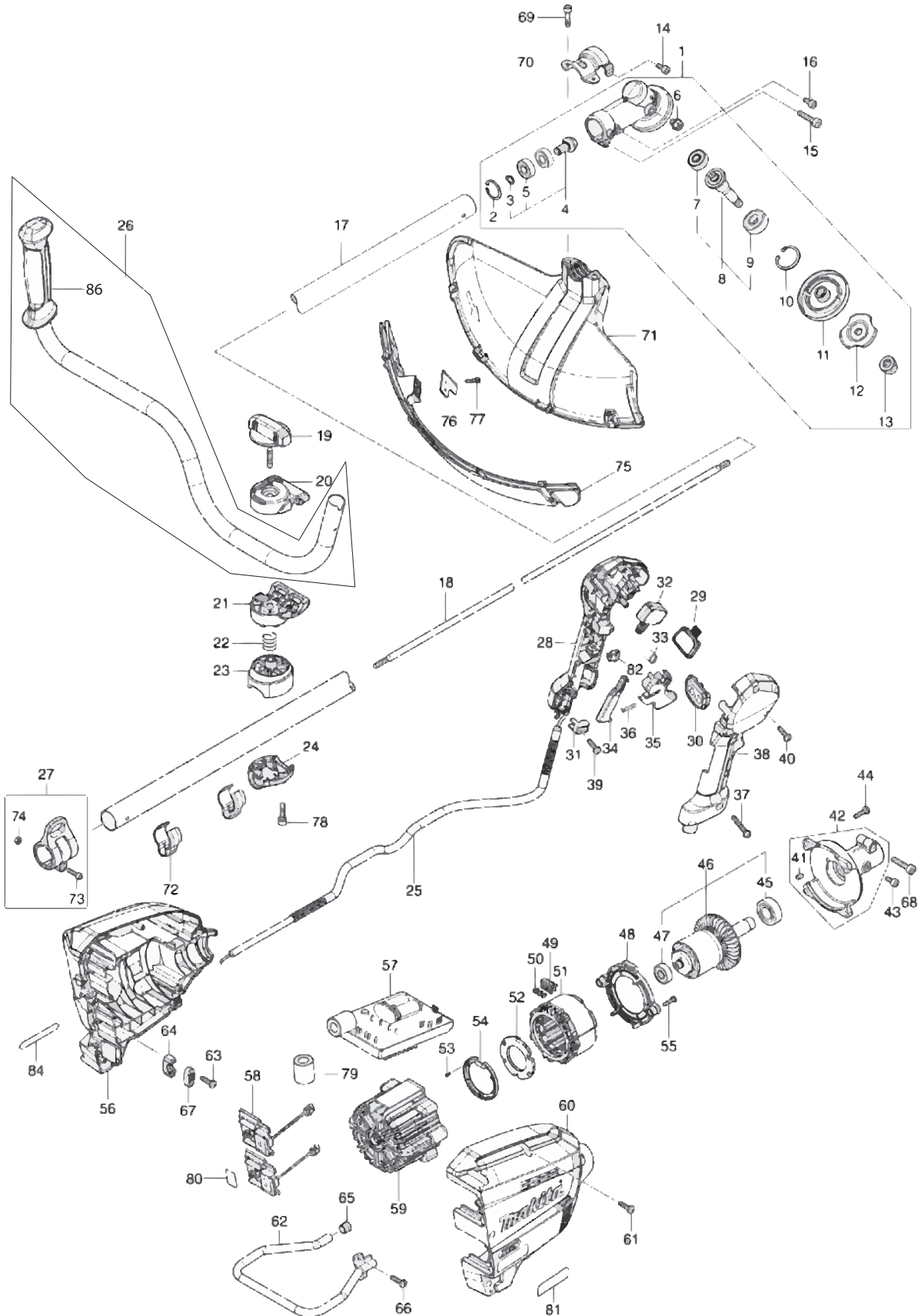




GRU05



Products with multiple versions are listed in subsiding order with the newest version on top not indented.

Section	Fig. No.	Part No.	Description	GRU05	Tech Bulletin	Notes
1	1	127238-3	GEAR CASE ASSEMBLY G	1		INC. 2,4,6,8,10-13
1	2	257470-6	RETAINING RING (INT) R-26	1		
1	3	257471-4	RETAINING RING (EXT) S-10	1		
1	4	136564-9	SPIRAL BEVEL GEAR 13 ASS'Y	1		INC. 3,5
1	5	211097-6	BALL BEARING 6000LLB	2		
1	5	210067-2	BALL BEARING 6000ZZ	2		
1	6	265590-2	HEX.BOLT M8X10 WITH R	1		
1	7	210042-8	BALL BEARING 629ZZ	1		
1	7	210084-2	BALL BEARING 629ZZ	1		
1	8	136565-7	CUTTER SHAFT G ASS'Y	1		INC. 7,9
1	9	211129-9	BALL BEARING 6201LLU	1		
1	9	211137-0	BALL BEARING 6201LLU	1		
1	10	257469-1	RETAINING RING (INT) R-32	1		
1	11	140J59-6	RECEIVE WASHER COMPLETE G	1		
1	12	162567-7	CLAMP WASHER COMPLETE G	1		
1	13	252236-9	HEX. LOCK NUT M10-17	1		
1	14	922211-6	H.S.H.BOLT M5X12 WITH W	1		
1	15	922353-6	HEX.SOCKET HEAD BOLT M6X30	1		
1	16	922211-6	H.S.H.BOLT M5X12 WITH W	1		
1	17	141D76-3	SHAFT PIPE COMPLETE C	1		
1	18	327845-4	SHAFT	1		
1	19	168796-0	KNOB 57	1		
1	20	144313-0	UPPER HANDLE HOLDER COMPLETE	1		
1		263005-3	RUBBER PIN 6	1		INC WITH FIG 20/NOT PICTURED
1	21	319517-5	LOWER HANDLE HOLDER	1		
1	22	233309-7	COMPRESSION SPRING 17	1		
1	23	319799-9	PIPE HOLDER	1		
1	24	318422-3	PIPE CLAMP	1		
1	25	699171-4	POWER SUPPLY CORD UNIT	1		
1	26	140J61-9	HANDLE 22 COMPLETE	1		INC. 86
1		273014-4	GRIP 36	1		INC WITH FIG 26
1	27	125558-9	HANGER ASSEMBLY	1		INC. 73,74

Products with multiple versions are listed in subsiding order with the newest version on top not indented.

Section	Fig. No.	Part No.	Description	GRU05	Tech Bulletin	Notes
1	28	183T68-2	GRIP SET	1		INC. 38
1		252180-0	HEX. LOCK NUT M5-8	1		INC WITH FIG 28/NOT PICTURED
1	29	141D26-8	INDICATION CIRCUIT COMPLETE G	1		
1	30	140W06-5	SWITCH CIRCUIT COMPLETE G	1		
1		819J26-9	SWITCH LABEL	1		INC WITH FIG 30/NOT PICTURED
1	31	687260-7	STRAIN RELIEF	1		
1	32	651492-2	SWITCH C3JR-1A-PAXD3	1		
1	33	233540-5	TORSION SPRING 11	1		
1	34	459146-3	LOCK OFF LEVER	1		
1	35	459145-5	SWITCH LEVER	1		
1	36	233101-1	COMPRESSION SPRING 4	1		
1	37	911258-5	PAN HEAD SCREW M5X35	1		
1	38	183T68-2	GRIP SET	1		INC. 28
1	39	266326-2	TAPPING SCREW 4X18	1		
1	40	266326-2	TAPPING SCREW 4X18	5		
1	41	263005-3	RUBBER PIN 6	1		INC WITH FIG 42/NOT PICTURED
1	42	136465-1	PIPE BRACKET ASSEMBLY	1		INC FIG 41
1	43	922211-6	H.S.H.BOLT M5X12 WITH W	1		
1	44	266420-0	TAPPING SCREW 5X20	4		
1	45	210301-0	BALL BEARING 6003DDW	1		
1	45	211275-8	BALL BEARING 6003DDW	1		
1	46	519560-6	ROTOR ASS'Y	1	DE749	INC. 45,47
1	47	210059-1	BALL BEARING 6000DDW	1		
1	48	459144-7	BAFFLE PLATE	1		
1	49	632T09-0	LEAD UNIT	1		
1	50	652031-1	PAN HEAD SCREW M3X6	3		
1	51	629A82-5	STATOR	1		
1	52	620F36-5	CONTROLLER B	1		
1	53	266490-9	TAPPING SCREW PT 2X6	3		
1	54	687B69-9	STOPPER	1		
1	55	266326-2	TAPPING SCREW 4X18	2		
1	56	183T69-0	HOUSING SET	1		INC 60
1		263005-3	RUBBER PIN 6	4		INC WITH FIG 56/NOT PICTURED
1	57	620F34-9	CONTROLLER	1		

Products with multiple versions are listed in subsiding order with the newest version on top not indented.

Section	Fig. No.	Part No.	Description	GRU05	Tech Bulletin	Notes
1	58	632P49-4	TERMINAL UNIT	2		
1	59	459143-9	MOTOR HOUSING	1		
1	60	183T69-0	HOUSING SET	1		INC 56
1		263005-3	RUBBER PIN 6	4		INC WITH FIG 60/NOT PICTURED
1	61	266326-2	TAPPING SCREW 4X18	6		
1	62	347846-6	BATTERY GUARD	1		
1	63	266326-2	TAPPING SCREW 4X18	2		
1	64	687051-6	STRAIN RELIEF	1		
1	65	422230-7	CAP	1		
1	66	266420-0	TAPPING SCREW 5X20	2		
1	67	687052-4	STRAIN RELIEF	1		
1	68	922353-6	HEX.SOCKET HEAD BOLT M6X30	1		
1	69	266280-0	HEX. SOCKET HEAD BOLT M6X25	2		
1	70	347494-1	PROTECTOR CLAMP28	1		
1	71	459147-1	PROTECTOR 480	1		
1	72	455588-9	WIRE CLAMP	2		
1	73	266698-5	HEX. SOCKET HEAD BOLT M5X20	1		
1	74	264086-0	HEX.NUT M5	1		
1	75	141D72-1	PROTECTOR EXT. 480 COMPLETE	1		
1	76	347493-3	CUTTER	1		
1	77	266326-2	TAPPING SCREW 4X18	2		
1	78	922341-3	HEX. SOCKET HEAD BOLT M6X25	2		
1	82	632G61-0	SWITCH UNIT	1		
1	86	252180-0	HEX. LOCK NUT M5-8	1		INC WITH FIG 38/NOT PICTURED
1	A01	122A37-4	BAND ASSEMBLY	1		NOT PICTURED
1	A03	196895-8	CUTTER BLADE SET	1		NOT PICTURED
1	A04	456924-2	BLADE COVER	1		NOT PICTURED
1	A05	782238-6	BOX WRENCH 17	1		NOT PICTURED
1	A06	783202-0	HEX. WRENCH 4	1		NOT PICTURED
1	A07	783217-7	HEX. WRENCH 5	1		NOT PICTURED