

Makita[®]

3-1/4" PLANER KIT

HIGH POWER TO WEIGHT RATIO; WEIGHS ONLY 5.5 LBS.

Easy Blade Setting System for Fast Blade Installation

Equipped with Double Edge Carbide Blades for Added Performance

Rigid Die-Cast Aluminum Housing with All Ball Bearing Construction for Long Tool Life

Machined Aluminum and Balanced Planer Drum for Reduced Vibration and Added Durability

Model
KP0800K

POWER



6.5 AMP motor delivers more output power for increased stock removal and superior finishes

CAPACITY



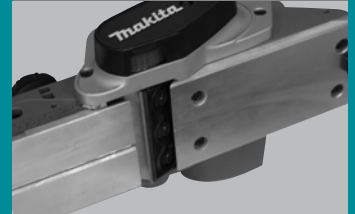
Planes up to 3-1/4" wide and 3/32" deep in a single pass

CONVENIENCE



Spring-loaded stand elevates the base protecting the workpiece

PRECISION



Precision machined aluminum base for planing accuracy

MORE PLANING.

3-1/4" PLANER KIT

Model KP0800K

FEATURES & BENEFITS

- High power to weight ratio; weighs only 5.5 lbs.
- 6.5 AMP motor delivers more output power for increased stock removal and superior finishes
- Planes up to 3-1/4" wide and 3/32" deep in a single pass
- Two-blade cutter head with 17,000 RPM delivers smooth finish and fast stock removal
- Easy blade setting system for fast blade installation
- Precision machined aluminum base for planing accuracy
- Equipped with double edge carbide blades for added performance
- Rigid die-cast aluminum housing with all ball bearing construction for long tool life
- Machined aluminum and balanced planer drum for reduced vibration and added durability
- Lock-on button for continuous operation
- Ergonomically centered balance with rubberized front and rear comfort handles
- Spring-loaded stand elevates the base protecting the workpiece

STANDARD EQUIPMENT

- Blade gauge assembly (123062-2)
- Wrench (782209-3)
- Straight guide rule (165581-2)
- Double edge tungsten-carbide planer blade* (D-16966)
- Tool case (824892-1)

SPECIFICATIONS

Planing width	3-1/4"
Planing depth	3/32"
No load speed	17,000 RPM
AMPS (115V)	6.5
Overall length	11-1/4"
Net weight	5.5 lbs.
Shipping weight	12.0 lbs.
UPC code	088381-603935

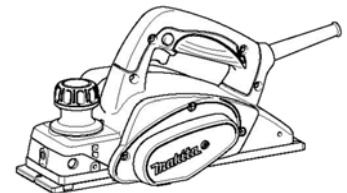
OPTIONAL ACCESSORIES

- Tungsten-carbide planer blades (D-17223)
- High-speed steel planer blades (D-17271)
- Double edge tungsten-carbide planer blades* (D-16966)
- Double edge tungsten-carbide planer blades with set plates (D-17239)
- Blade gauge assembly (123062-2)
- Straight guide rule (165581-2)
- Bevel guide (123060-6)
- Nozzle assembly (451329-1)
- Sharpening holding assembly (123004-6)

*Blades only

Makita offers a wide variety of Planer accessories. For a complete listing, please refer to the Makita General Catalog, visit our website at makitatools.com, or call 1-800-4MAKITA.

All specifications subject to change without prior notice. All models and accessories subject to stock on hand.
NTF-0909-400 MA-0764-09



Model KP0800K



0 88381 60393 5



Makita U.S.A., 14930 Northam St., La Mirada, CA 90638