



## DESCRIPCIÓN DE ACCESORIO NUEVO

### CARACTERÍSTICAS Y VENTAJAS

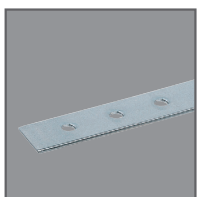
- Capacidad de grosor de la placa de metal de 5/64" (2 mm) hasta 5/32" (4 mm) en acero general y de 1/8" (3 mm) hasta 5/32" (4 mm) en acero inoxidable
- Ideal para hacer perforaciones en acero general y acero inoxidable
- Para instalación fácil y rápida para conveniencia del usuario
- Para usar con la Perforadora de Metal Inalámbrica modelo XPP01 de Makita

### PUNTOS DESTACADOS DEL PRODUCTO



#### CAPACIDAD

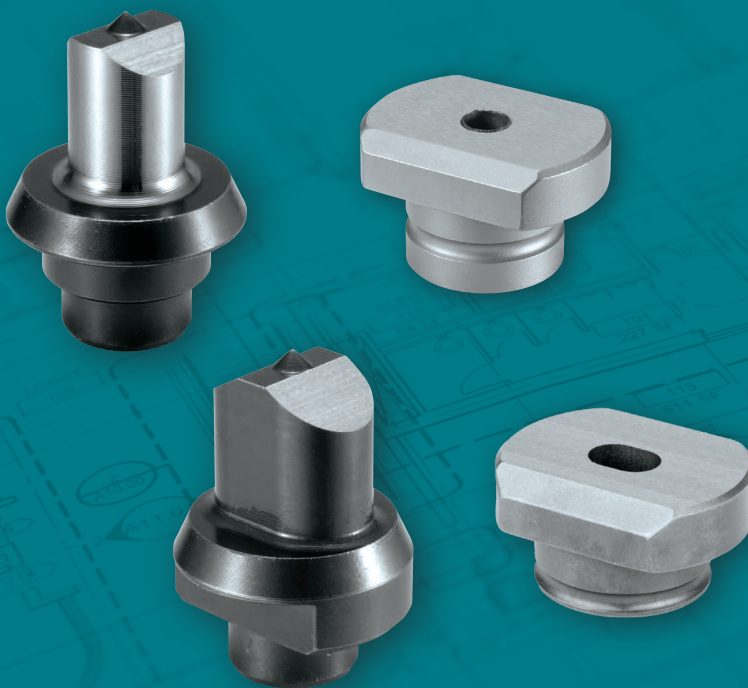
Ideal para hacer perforaciones en acero general y acero inoxidable



#### DISEÑO

Capacidad de placa con grosor de 5/64" hasta 5/32" en acero general de 1/8" hasta 5/32" en acero inoxidable

## XPP01 PERFORADORES Y DADOS



### REDONDO

TAMAÑO DE PERFORACIÓN	NÚMERO DE PORTE	TAMAÑO DE DADO	NÚMERO DE PORTE
15/64" (6 mm), XPP01	SC05340040	15/64" (6 mm) - SB, XPP01	SC00000203
1/4" (6.5 mm), XPP01	SC05340050	1/4" (6.5 mm) - SB, XPP01	SC00000205
5/16" (8 mm), XPP01	SC05340060	5/16" (8 mm) - SB, XPP01	SC00000207
11/32" (8.5 mm), XPP01	SC05340070	11/32" (8.5 mm) - SB, XPP01	SC00000209
3/8" (10 mm), XPP01	SC05340080	3/8" (10 mm) - SB, XPP01	SC00000211
7/16" (11 mm), XPP01	SC05340090	7/16" (11 mm) - SB, XPP01	SC00000213
15/32" (12 mm), XPP01	SC05340100	15/32" (12 mm) - SB, XPP01	SC00000215
1/2" (13 mm), XPP01	SC05340110	1/2" (13 mm) - SB, XPP01	SC00000217
9/16" (14 mm), XPP01	SC05340120	9/16" (14 mm) - SB, XPP01	SC00000219
19/32" (15 mm), XPP01	SC05340130	19/32" (15 mm) - SB, XPP01	SC00000221
5/8" (16 mm), XPP01	SC05340140	5/8" (16 mm) - SB, XPP01	SC05332710
23/32" (18 mm), XPP01	SC05340150	23/32" (18 mm) - SB, XPP01	SC00000223
25/32" (20 mm), XPP01	SC05340160	25/32" (20 mm) - SB, XPP01	SC05352510

### OVALADO

TAMAÑO DE PERFORACIÓN	NÚMERO DE PORTE	TAMAÑO DE DADO	NÚMERO DE PORTE
1/4" x 3/8" (6.5 mm x 10 mm), XPP01	SC05340200	1/4" x 3/8" (6.5 mm x 10 mm), XPP01	SC00000244
1/4" x 1/2" (6.5 mm x 13 mm), XPP01	SC05340210	1/4" x 1/2" (6.5 mm x 13 mm), XPP01	SC00000246
11/32" x 1/2" (8.5 mm x 13 mm), XPP01	SC05340220	11/32" x 1/2" (8.5 mm x 13 mm), XPP01	SC00000248
11/32" x 43/64" (8.5 mm x 17 mm), XPP01	SC05340230	11/32" x 43/64" (8.5 mm x 17 mm), XPP01	SC00000250
23/64" x 17/32" (9 mm x 13.5 mm), XPP01	SC05340240	23/64" x 17/32" (9 mm x 13.5 mm), XPP01	SC00000252
23/64" x 23/32" (9 mm x 18 mm), XPP01	SC05340250	23/64" x 23/32" (9 mm x 18 mm), XPP01	SC00000254
3/8" x 19/32" (10 mm x 15 mm), XPP01	SC05340260	3/8" x 19/32" (10 mm x 15 mm), XPP01	SC00000256
3/8" x 25/32" (10 mm x 20 mm), XPP01	SC05340270	3/8" x 25/32" (10 mm x 20 mm), XPP01	SC00000258
7/16" x 21/32" (11 mm x 16.5 mm), XPP01	SC05340280	7/16" x 21/32" (11 mm x 16.5 mm), XPP01	SC00000260
15/32" x 23/32" (12 mm x 18 mm), XPP01	SC05340290	15/32" x 23/32" (12 mm x 18 mm), XPP01	SC00000262
1/2" x 49/64" (13 mm x 19.5 mm), XPP01	SC05340300	1/2" x 49/64" (13 mm x 19.5 mm), XPP01	SC00000264
9/16" x 53/64" (14 mm x 21 mm), XPP01	SC05340310	9/16" x 53/64" (14 mm x 21 mm), XPP01	SC00000266