



# 18v LXT® Lithium-Ion Brushless Cordless 4-1/2" / 5" Cut-Off/Angle Grinder, with Electric Brake, Tool Only

Model XAG09Z

## Electric Brake and Torque Control for Operator Convenience



### PRODUCTIVITY

Electric brake stops the grinding or cut-off wheel in 2 seconds or less for maximum productivity



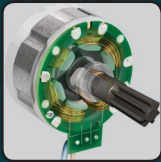
### CONTROL

Electronic Torque Control turns the motor off if rotation speed suddenly slows or stops



### INNOVATION

Automatic Speed Change™ technology adjusts speed and torque during operation for optimum performance



### POWER

BL™ Motor delivers 8,500 RPM

## LXT® BRUSHLESS



## FEATURES

- The BL™ Brushless Motor eliminates carbon brushes, enabling the BL™ Motor to run cooler and more efficiently for longer life
- Efficient BL™ Brushless motor is electronically controlled to optimize battery energy use for up to 50% longer run time per charge
- The electronically-controlled BL™ Brushless Motor efficiently uses energy to match torque and RPM to the changing demands of the application
- Compact and ergonomic design at only 14-1/4" long
- Weighs only 5.7 lbs. with battery (battery not included) for reduced operator fatigue
- Rubberized soft grip provides increased comfort on the job
- Slide switch with lock-on for operator convenience
- Extreme Protection Technology (XPT™) is engineered for improved dust and water resistance for operation in harsh conditions

## STANDARD EQUIPMENT

- 5" Tool-less Wheel Guard (123145-8)
- 5" Cut-Off Wheel Guard (122911-0)
- 5" x 1/4" x 7/8" INOX Grinding Wheel, 36 Grit (A-95962)
- 5" Ultra Thin Cut-Off Wheel, Stainless (B-46165)
- Side Handle

## SPECIFICATIONS

Wheel Diameter	5"
Battery	18V LXT® Lithium-Ion
No Load Speed	8,500 RPM
Spindle Thread	5/8" - 11 UNC
Lock On Switch	Yes
Lock-Off	No
Grinder Switch Type	Body grip/slide
Overall Length	14-1/4"
Net Weight (with battery)	5.7 lbs.
UPC Code	088381-814904

## OPTIONAL ACCESSORIES

- 4-1/2" - 5" Dust Extracting Surface Grinding Shroud (195236-5)
- 5" Dust Extracting Cutting Guard (193794-5)
- 5" Dust Extracting Tuck Point Guard (196846-1)
- 18V X2 LXT® Lithium-Ion (36V) Cordless/Corded 2.1 Gallon HEPA Filter Dry Vacuum, Tool Only (XCV04Z)
- 12 Gallon Xtract Vac® Wet/Dry Vacuum/Dust Extractor (VC4710)