



18v X2 LXT® Lithium-Ion (36v) Brushless Cordless 1/2 Gallon HEPA Filter Backpack Dry Vacuum, Tool Only Model XCV05ZX

Powerful Suction Power in a Light and Comfortable Design



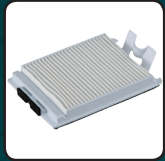
RUN TIME

Up to 90 minutes of continuous operation using two 18V LXT® 5.0Ah batteries (batteries not included)



POWER

Powerful motor generates 53 CFM of suction power and 28.5" of water lift



EFFICIENCY

Efficient HEPA filtration system captures large, small and micro dust particulates



APPLICATIONS

Includes the tool adapters for hose connection to most Makita dust extraction attachments



Uses **2**
18V LXT®
Batteries

Batteries
not included



LXT® X2 18V 18V-36V
BRUSHLESS

FEATURES

- Powerful motor generates 53 CFM of suction power and 28.5" of water lift
- Efficient two stage HEPA filtration system captures large, small and micro dust particulates extending the life of the main HEPA filter
- Quiet operating sound level of 70 dB(A)
- Efficient BL™ Brushless motor is electronically controlled to optimize battery energy use for up to 50% longer run time per charge
- The BL™ Brushless Motor eliminates carbon brushes, enabling the BL™ Motor to run cooler and more efficiently for longer life
- Package includes the common tool cuff adapters required for hose connection with most Makita dust extraction attachments
- 59" hose for extended reach and comfort
- Built-in L.E.D. light on the controller illuminates the work area

SPECIFICATIONS

Air Flow Rate	53 CFM
Static Water Lift	28.5"
Battery	2X 18V LXT® Lithium-Ion
Continuous Use (max, in minutes)	60 min.
HEPA filters available	Yes
Working Sound Level	70 dB(A)
Gross Container Size	.5 gal.
Overall Length	14-3/4"
Net Weight (with battery)	9.4 lbs.

STANDARD EQUIPMENT

- Tool Cuff Adapter, 22mm for 1" hose (417765-1)
- Tool Cuff Adapter, 24mm for 1" hose (424379-9)
- Tool Cuff Adapter, 38mm for 1" hose (417766-9)
- Flexible Hose 1" x 59" (152992-0)
- Harness (161479-1)
- HEPA Filter (123636-9)
- Filter Dust Bag, 1/pk (161471-7)

OPTIONAL ACCESSORIES

- Dust Extraction Attachment, SDS-Plus, Drilling (193472-7)
- Dust Extraction Cup (195173-3)
- 4-1/2" - 5" Dust Extracting Surface Grinding Shroud (195236-5)
- 18V LXT® Lithium-Ion 5.0Ah Battery (BL1850B)
- 18V LXT® Lithium-Ion Dual Port Rapid Optimum Charger (DC18RD)
- Filter Dust Bag, 10/pk (197902-0)