

36V (18V X2) LXT® 19" SELF-PROPELLED LAWN MOWER KIT WITH 4 BATTERIES (5.0Ah)



NEW TOOL OVERVIEW XML14CT1

LXT X2 18V + 18V 36V

FEATURES

- No gas, emissions, oil mixing or pull starts with reduced maintenance and low noise levels
- Powerful motor delivers 3,100 RPM for faster cutting
- Delivers up to 55 minutes of run time with four LXT® 5.0Ah batteries
- Self-propelled with variable speed (1.5 MPH - 3 MPH)
- Rear-wheel drive self-propelled technology for improved traction and performance on incline slopes and uneven terrain
- Ergonomic composite deck weighs less for reduced required push force and easier transport
- Single lever quickly adjusts cutting height (1-1/4" – 4")
- Maximum grip tires for improved performance on damp grass or uneven terrain
- IPX4 weather-resistant construction for durability and long life

SPECIFICATIONS

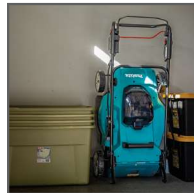
Cutting Width	19"
Deck Width	20"
Cutting Height Range	1-1/4" - 4"
Maximum Speed (RPM)	3,100
Bag Capacity(Bushels)	1.76
Net Weight (with battery)	58.9 lbs.
Net Weight (without battery)	56.1 lbs.
Dimensions (LxWxH)	66-1/2" x 27-7/8" x 41-3/4"
Shipping Weight	84.89 lbs.
UPC Code	088381-781947

PRODUCT HIGHLIGHTS



VERSATILITY

Rear-wheel drive self-propelled cruise control technology with variable speed (1.5 MPH - 3 MPH)



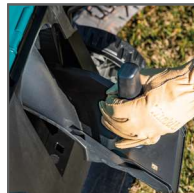
CONVENIENCE

Folding handle for compact upright storage



COMPACT

Ergonomic composite deck weighs less for reduced required push force and easier transport



DESIGN

3-in-1 design allows for mulching, bagging or rear discharge

STANDARD EQUIPMENT

- (4) 18V LXT® Lithium-Ion 5.0Ah Battery (BL1850B)
- 18V LXT® Lithium-Ion Dual Port Charger (DC18SH)
- 19" Lawn Mower Blade (191V97-3)
- Grass Catcher Bag (162C65-9)
- Grass Catcher Bag Frame (162C44-7)
- Mulching Plug (413946-5)
- Lock Key (643535-4)

RELATED PRODUCTS

1. 18V LXT® Brushless Blower Kit (XBU03SM1)
2. 18V LXT® Brushless 13" String Trimmer Kit (XRU23SM1)
3. 18V LXT® 18" Telescoping Articulating Pole Hedge Trimmer (XNU05Z)
4. 18V LXT® 22" Hedge Trimmer (XHU02Z)
5. 18V LXT® Brushless 12" Top Handle Chain Saw (XCU10Z)

