



18v LXT® Lithium-Ion Brushless Cordless Drywall Screwdriver Kit (5.0Ah)

Model XSF03T

Push Drive™ Technology for Quieter Operation; Minimizes Power Consumption



INNOVATION

Push Drive™ Technology for quieter operation; minimizes power consumption



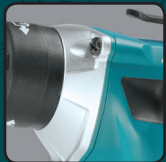
POWER

BL™ Motor delivers 0-4,000 RPM to handle a variety of drywall and framing applications



COMFORT

Ergonomically designed rubberized pistol grip with large 2-finger trigger for increased comfort



DURABILITY

All metal gears and gear housing for maximum job site durability

LXT® BRUSHLESS



Also Available as a Bare Tool
Model XSF03Z

FEATURES

- Push Drive™ Technology – in lock-on mode the motor starts only when the fastener is engaged for a quieter work environment and to save battery power
- The BL™ Brushless Motor eliminates carbon brushes, enabling the BL™ Motor to run cooler and more efficiently for longer life
- Efficient BL™ Brushless motor is electronically controlled to optimize battery energy use for up to 50% longer run time per charge
- The electronically-controlled BL™ Brushless Motor efficiently uses energy to match torque and RPM to the changing demands of the application
- Adjustable nose piece delivers consistent screw depth
- Lock-on button for continuous use
- Compact and ergonomic design at only 9-7/8" long

SPECIFICATIONS

Bit Type	1/4" Hex
No Load Speed (variable speed)	0 - 4,000 RPM
Battery	18V LXT® Lithium-Ion
Overall Length	9-7/8"
Net Weight (with battery)	3.8 lbs.
UPC Code (XSF03T)	088381-841825
UPC Code (XSF03Z)	088381-686518

STANDARD EQUIPMENT

XSF03T

- (2) 18V LXT® Lithium-Ion 5.0Ah Batteries (BL1850B)
- 18V LXT® Lithium-Ion Rapid Optimum Charger (DC18RC)
- 3" Magnetic Bit Holder (784812-6)
- (2) Insert Bit
- Tool Case

XSF03Z

- (2) Insert Bit
- 3" Magnetic Bit Holder (784812-6)
- Tool Only - Battery and Charger Sold Separately

OPTIONAL ACCESSORIES

- 18V LXT® Lithium-Ion Compact 2.0Ah Battery (BL1820B)
- 18V LXT® Lithium-Ion 3.0Ah Battery (BL1830B)
- 18V LXT® Lithium-Ion 4.0Ah Battery (BL1840B)
- 18V LXT® Lithium-Ion Dual Port Rapid Optimum Charger (DC18RD)
- 18V LXT® Lithium-Ion 4-Port Charger (DC18SF)

All specifications subject to change without prior notice. All models and accessories subject to stock on hand. The Makita Teal Color is the trade dress of Makita Corporation and is protected under common law and registered with the U.S. Patent and Trademark Office

Makita offers a wide variety of accessories. For a complete listing, please refer to the Makita General Catalog or visit our website at makitatools.com, or call 1-800-4MAKITA.