



18v LXT® Lithium-Ion Compact Brushless Cordless Drywall Screwdriver Kit (2.0Ah)

Model XSF03R

Push Drive™ Technology for Quieter Operation; Minimizes Power Consumption



INNOVATION

Push Drive™ technology for quieter operation; minimizes power consumption



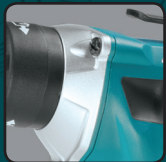
POWER

BL™ Motor delivers 0-4,000 RPM to handle a variety of drywall and framing applications



COMFORT

Ergonomically designed rubberized pistol grip with large 2-finger trigger for increased comfort



DURABILITY

All metal gears and gear housing for maximum job site durability

LXT® BRUSHLESS



Also Available as a Bare Tool
Model XSF03Z

FEATURES

- Push Drive™ Technology – in lock-on mode the motor starts only when the fastener engages for more efficient battery usage and increased drywall installation
- The BL™ Brushless Motor eliminates carbon brushes, enabling the BL™ Motor to run cooler and more efficiently for longer life
- Efficient BL™ Brushless motor is electronically controlled to optimize battery energy use for up to 50% longer run time per charge
- The electronically-controlled BL™ Brushless Motor efficiently uses energy to match torque and RPM to the changing demands of the application
- Adjustable nose piece delivers consistent screw depth
- Lock-on button for continuous use
- Compact and ergonomic design at only 9-7/8" long

SPECIFICATIONS

Bit Type	1/4" Hex
No Load Speed (variable speed)	0 - 4,000 RPM
Battery	18V LXT® Compact Lithium-Ion
Overall Length	9-7/8"
Net Weight (with battery)	3.2 lbs.
UPC Code (XSF03R)	088381-841078
UPC Code (XSF03Z)	088381-686518

STANDARD EQUIPMENT

XSF03R

- (2) 18V LXT® Lithium-Ion Compact 2.0Ah Battery (BL1820B)
- 18V LXT® Lithium-Ion Rapid Optimum Charger (DC18RC)
- 3" Magnetic Bit Holder (784812-6)
- (2) Insert Bit
- Tool Case

XSF03Z

- (2) Insert Bit
- 3" Magnetic Bit Holder (784812-6)
- Tool Only - Battery and Charger Sold Separately

OPTIONAL ACCESSORIES

- 18V LXT® Lithium-Ion 3.0Ah Battery (BL1830B)
- 18V LXT® Lithium-Ion 4.0Ah Battery (BL1840B)
- 18V LXT® Lithium-Ion 5.0Ah Battery (BL1850B)
- 18V LXT® Lithium-Ion Dual Port Rapid Optimum Charger (DC18RD)
- 18V LXT® Lithium-Ion 4-Port Charger (DC18SF)