

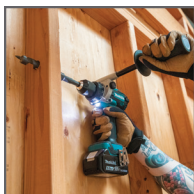
18V LXT® LITHIUM-ION BRUSHLESS CORDLESS 5-PC. COMBO KIT (5.0Ah)



3
YEAR
WARRANTY
LITHIUM-ION
TOOL & BATTERY

5.0Ah
BATTERY

PRODUCT HIGHLIGHTS



HAMMER DRILL

Variable 2-speed (0-550 & 0-2,100 RPM) delivers 1,250 in.lbs. of Max Torque; weighs only 6.0 lbs.



RECIPRO SAW

Delivers 0-2,300 (Low) & 0-3,000 (High) strokes per minute and a 1-1/4" stroke length



IMPACT DRIVER

BL™ Brushless Motor delivers 3,600 Max RPM and 1,600 in.lbs. of Max Torque

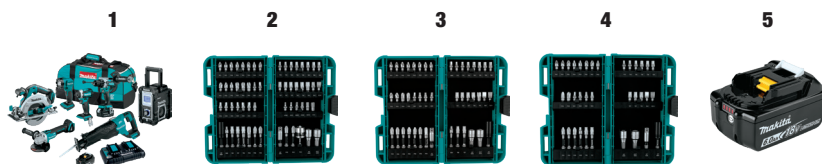


FLASHLIGHT

High-luminance 4 L.E.D. flashlight provides 160 lumens

RELATED PRODUCTS

1. 18V LXT® Brushless 7-Pc. Combo Kit (XT707PT)
2. Impact XPS® 60 Pc. Impact Bit Set (E-01644)
3. Impact XPS® 45 Pc. Impact Bit Set (E-01650)
4. Impact XPS® 35 Pc. Impact Bit Set (E-01666)
5. 18V LXT® Lithium-Ion 6.0Ah Battery (BL1860B)



NEW TOOL OVERVIEW

XT507PT

LXT® BRUSHLESS

FEATURES

- Variable 2-speed Hammer Driver-Drill with Makita built BL™ Brushless Motor delivers (0-550 & 0-2,100 RPM) and 1,250 in.lbs. of Max Torque; weighs only 6.0 lbs. with battery
- Impact Driver features 4-speed power selection (0-1,100 / 0-2,100 / 0-3,200 / 0-3,600 RPM & 0-1,100 / 0-2,600 / 0-3,600 / 0-3,800 IPM) provides 1,600 in.lbs. of Max Torque; weighs only 3.4 lbs. with battery
- 7-1/4" Circular Saw delivers 5,100 RPM for maximum performance and features a large 2-9/16" cutting capacity at 90°; weighs only 12.4 lbs. with batteries
- Recipro Saw delivers 0-2,300 (Low) & 0-3,000 (High) strokes per minute and a 1-1/4" stroke length for faster cutting; weighs only 8.2 lbs. with battery
- High-luminance 4 L.E.D. flashlight provides 160 lumens
- Extreme Protection Technology (XPT™) is engineered for improved dust and water resistance for operation in harsh conditions
- Equipped with Star Protection Computer Controls™ to protect against overloading, over-discharging and over-heating
- Dual Port Rapid Optimum Charger charges two batteries at the same time

SPECIFICATIONS

Tool Count	5
Voltage	18V
Battery	18V LXT® Lithium-Ion
Battery Charge Time (minutes)	45
Shipping Weight	43.22 lbs.
UPC Code	088381-729208

STANDARD EQUIPMENT

- 18V LXT® Brushless 1/2" Hammer Driver-Drill (XPH14Z)
- 18V LXT® Brushless 4-Speed Impact Driver (XDT16Z)
- 18V X2 (36V) LXT® Brushless Rear Handle 7-1/4" Circular Saw (XSR01Z)
- 18V LXT® Brushless Recipro Saw (XRJ05Z)
- 18V LXT® L.E.D. Flashlight (DML815)
- 18V LXT® Lithium-Ion Dual Port Charger (DC18RD)
- (2) 18V LXT® Lithium-Ion 5.0Ah Battery (BL1850B)
- Tool Bag