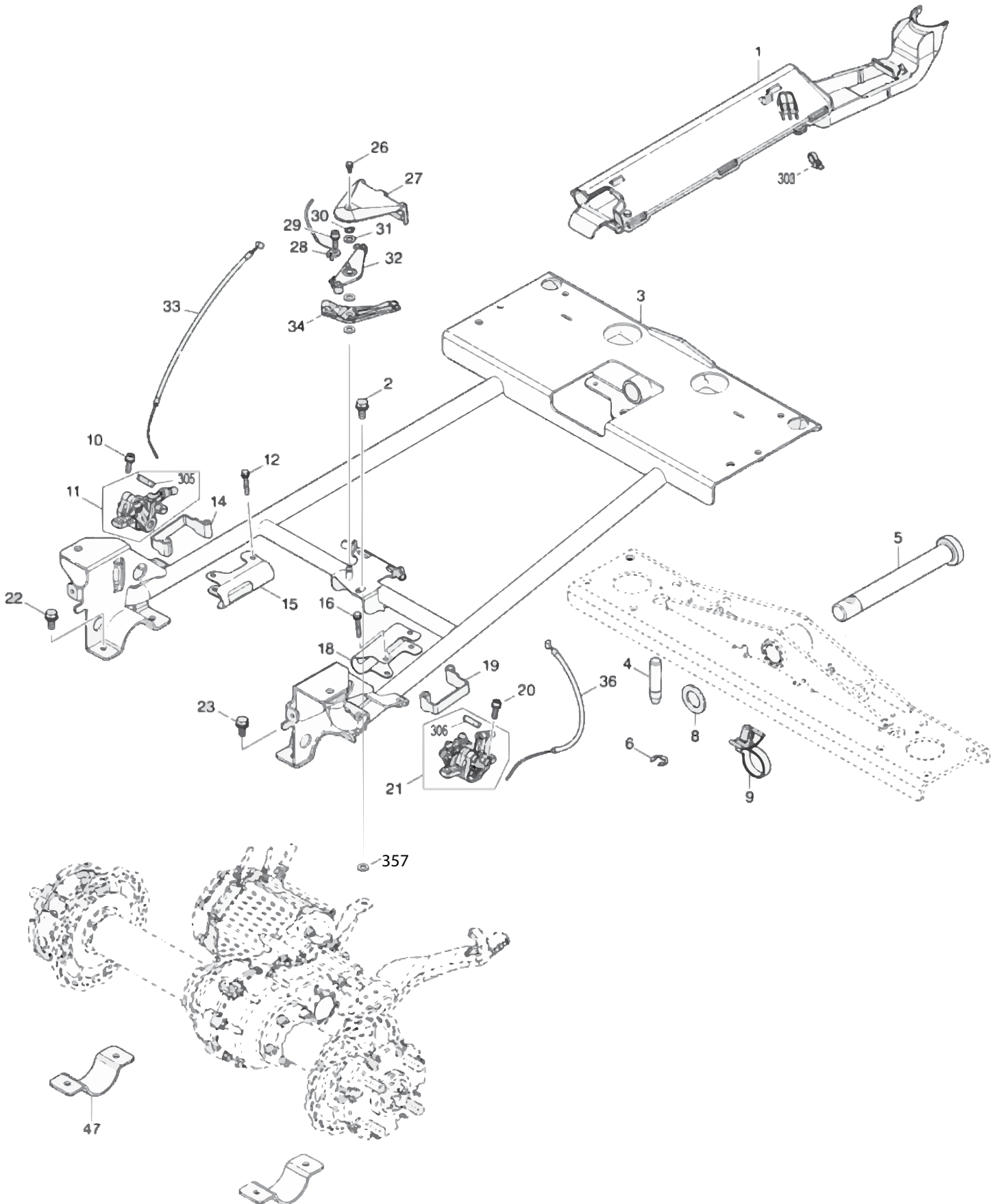




**XUC04**



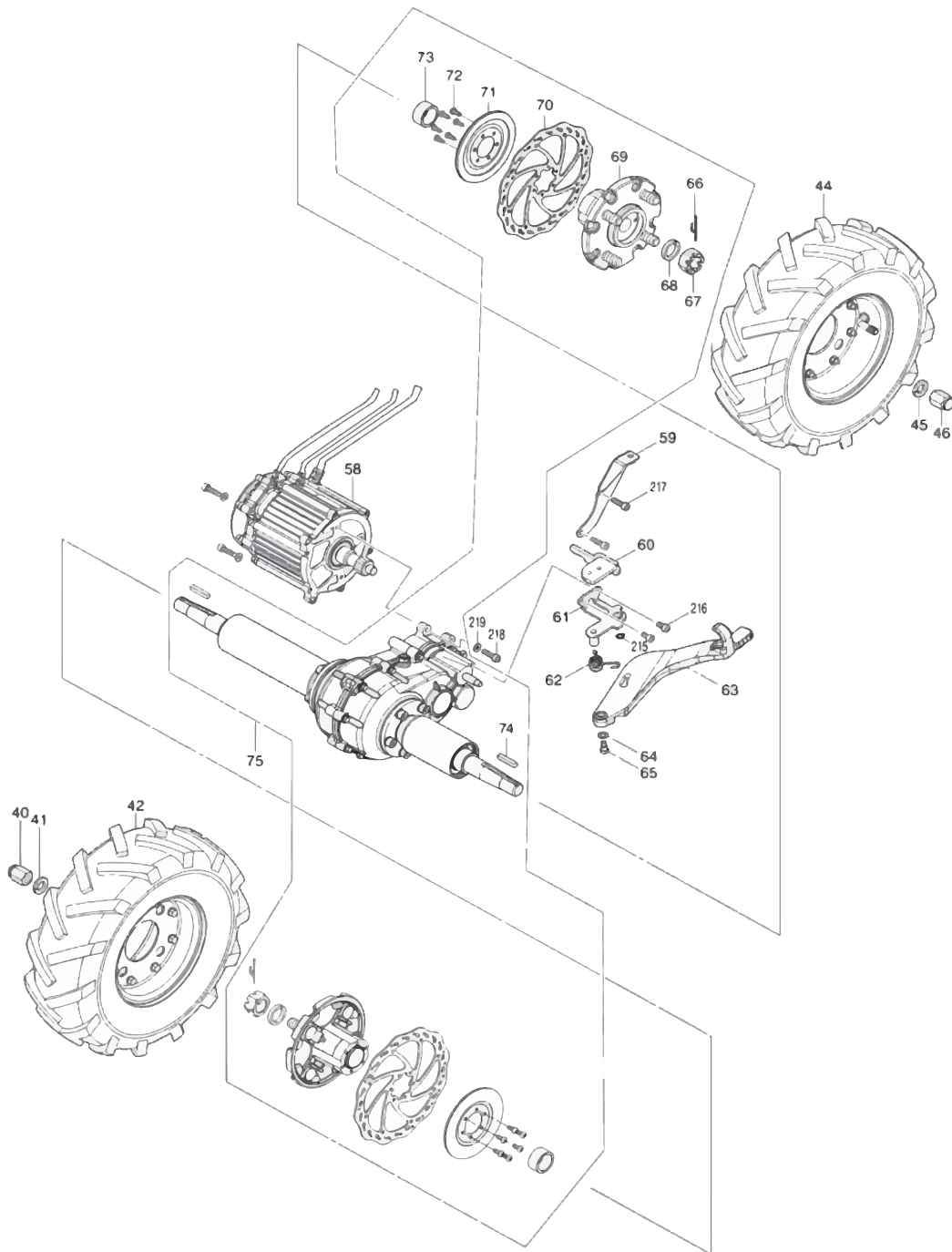
Products with multiple versions are listed in subsiding order with the newest version on top not indented.

Section	Fig. No.	Part No.	Description	XUC04	Tech Bulletin	Notes
1	1	412561-2	CORD COVER	1		
1	2	265B11-6	HEX. BOLT M8X20 WITH WR	1		
1	3	141P49-8	MAIN FRAME COMPLETE	1		
1	4	256940-2	PIN 14	1		
1	5	327472-7	BASE SHAFT 25	1		
1	6	961062-2	STOP RING E-12	1		
1	8	261163-9	RUBBER WASHER 25	1		
1	9	687F01-7	BAND	1		
1	10	265D23-1	HEX. S.H.B M6X22 WITH GM	2		
1	11	136868-9	BRAKE CALIPER R ASS'Y	1		INC. 305
1	12	265C76-4	HEX. BOLT M5X35 WITH WR	2		
1	14	347993-3	SCRAPER	1		
1	15	347995-9	CLAMP R	1		
1	16	265C76-4	HEX. BOLT M5X35 WITH WR	2		
1	18	347994-1	CLAMP L	1		
1	19	347993-3	SCRAPER	1		
1	20	265D23-1	HEX. S.H.B M6X22 WITH GM	2		
1	21	136869-7	BRAKE CALIPER L ASS'Y	1		INC. 306
1	22	265B11-6	HEX. BOLT M8X20 WITH WR	2		
1	23	265B11-6	HEX. BOLT M8X20 WITH WR	2		
1	26	265C46-3	HEX. BOLT M4X12 WITH WG	1		
1	27	413D28-7	BRAKE EQUALIZER COVER	1		
1	28	347629-4	CABLE CLAMP	1		
1	29	265B14-0	H.S.H.BOLT M6X20 WITH WR	1		
1	30	961004-6	RETAINING RING (EXT) S-8	1		
1	31	253165-9	FLAT WASHER 8	3		
1	32	319906-4	BRAKE EQUALIZER R	1		
1	33	140P25-9	BRAKE CABLE 370	1		
1	34	319905-6	BRAKE EQUALIZER L	1		
1	36	140P25-9	BRAKE CABLE 370	1		
1	40	252289-8	HEX. CAP NUT M14	4		
1	41	253475-4	SPRING WASHER 14	4		
1	42	141G99-9	TIRE 330 R ASSEMBLY	1		INC. 123-126,128-130

Products with multiple versions are listed in subsiding order with the newest version on top not indented.

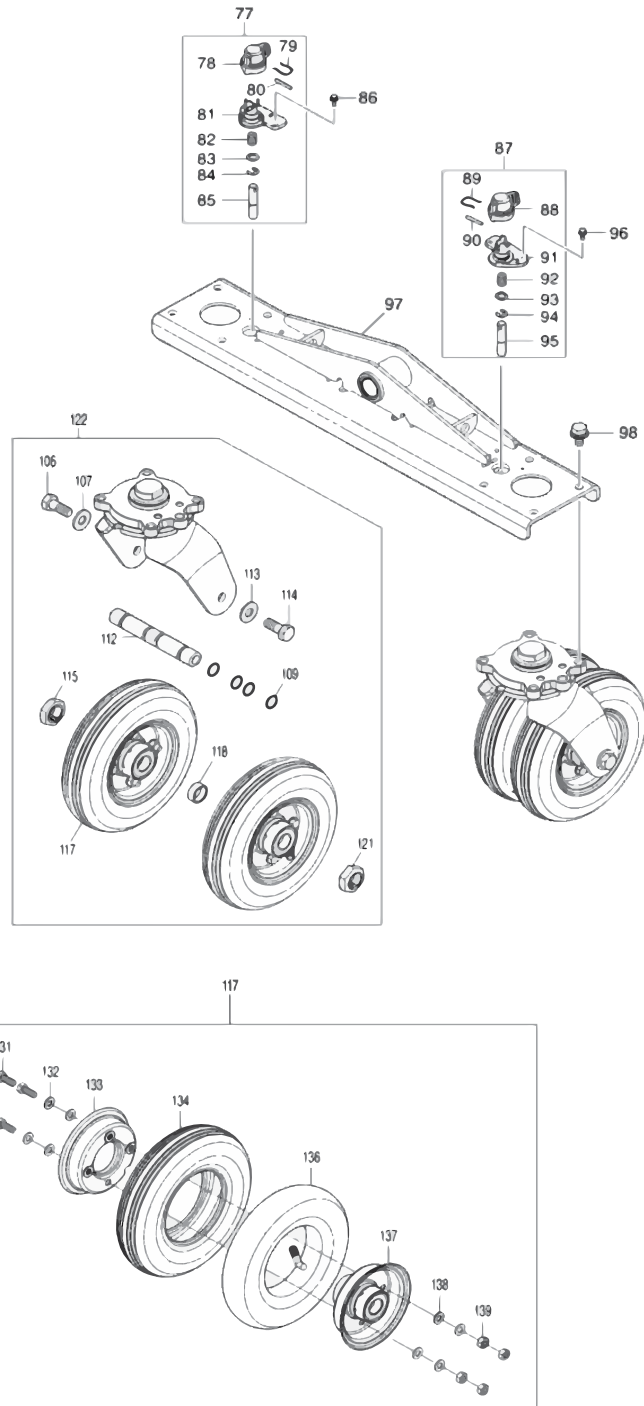
Section	Fig. No.	Part No.	Description	XUC04	Tech Bulletin	Notes
1	44	141H00-0	TIRE 330 L ASSEMBLY	1		INC. 48-54
1	45	253475-4	SPRING WASHER 14	4		
1	46	252289-8	HEX. CAP NUT M14	4		
1	47	347621-0	CLAMP 57	2		
1	303	687F00-9	BAND	1		
1	305	422961-8	PAD RETAINER	1		
1	306	422961-8	PAD RETAINER	1		
1	357	941201-0	FLAT WASHER 8	1		





Products with multiple versions are listed in subsiding order with the newest version on top not indented.

Section	Fig. No.	Part No.	Description	XUC04	Tech Bulletin	Notes
2	58	122E51-4	MOTOR ASSEMBLY	1		
2	59	347698-5	DIFF BRACKET	1		
2	60	347A16-3	NEUTRAL LEVER	1		
2	61	347697-7	NEUTRAL LEVER HOLDER	1		
2	62	232616-5	TORSION SPRING 14	1		
2	63	413D41-5	NEUTRAL CHANGE LEVER	1		
2	64	253430-6	FLAT WASHER 8	1		
2	65	265465-5	HEX. SOCKET HEAD BOLT M6	1		
2	66	NP00000001	SPLIT PIN 3-35	2		
2	67	NP00000002	HEX. NUT M20	2		
2	68	NP00000003	SPRING WASHER 22	2		
2	69	313304-4	HUB	2		
2	70	347208-8	BRAKE DISC	2		
2	71	141P62-6	PLATE COMPLETE	2		
2	72	265C87-9	H.S.B. HEAD SCREW M5X12	12		
2	73	327626-6	SLEEVE 25	2		
2	74	NP00000004	KEY 6	2		
2	75	122D22-5	DIFFERENTIAL GEAR UNIT	1		INC. 66-74
2	215	961004-6	RETAINING RING (EXT) S-8	1		
2	216	265C85-3	HEX SOCKET HEAD BOLT M6X12	2		
2	217	265C86-1	HEX SOCKET HEAD BOLT M6X22	2		
2	218	265C86-1	HEX SOCKET HEAD BOLT M6X22	3		
2	219	347A43-0	SPACER 6	3		

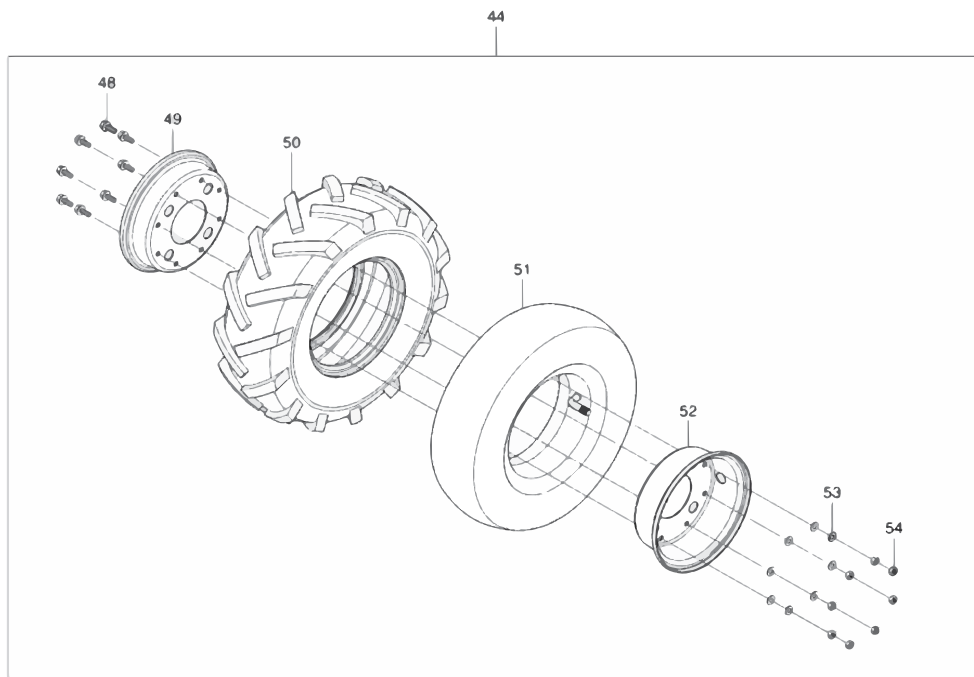
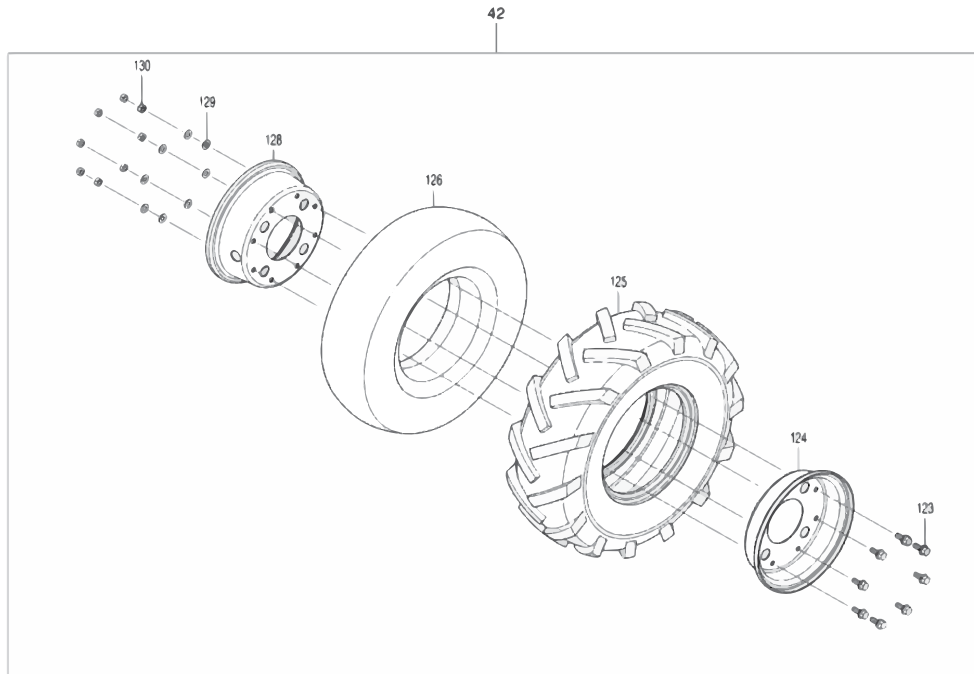


Products with multiple versions are listed in subsiding order with the newest version on top not indented.

Section	Fig. No.	Part No.	Description	XUC04	Tech Bulletin	Notes
3	77	122C29-5	TURNING LOCK R ASSEMBLY	1		INC. 78-85
3	78	413D33-4	LOCK LEVER	1		
3	79	327938-7	SNAP RETAINER	1		
3	80	268181-8	PIN 3	1		
3	81	413D32-6	LIFTER GUIDE R	1		
3	82	232617-3	COMPRESSION SPRING 10	1		
3	83	253173-0	FLAT WASHER 10	1		
3	84	961013-5	STOP RING E-7	1		
3	85	256A04-8	PIN 10	1		
3	86	265C46-3	HEX. BOLT M4X12 WITH WG	2		
3	87	122C28-7	TURNING LOCK L ASSEMBLY	1		INC. 88-95
3	88	413D33-4	LOCK LEVER	1		
3	89	327938-7	SNAP RETAINER	1		
3	90	268181-8	PIN 3	1		
3	91	413D31-8	LIFTER GUIDE L	1		
3	92	232617-3	COMPRESSION SPRING 10	1		
3	93	253173-0	FLAT WASHER 10	1		
3	94	961013-5	STOP RING E-7	1		
3	95	256A04-8	PIN 10	1		
3	96	265C46-3	HEX. BOLT M4X12 WITH WG	2		
3	97	162712-4	REAR BASE	1		
3	98	265B13-2	HEX. BOLT M10X20 WITH WG	8		
3	106	265B10-8	HEX BOLT M12X40	1		
3	107	253460-7	FLAT WASHER 13	1		
3	109	213211-0	O RING 15	4		
3	112	327646-0	AXLE 20	1		
3	113	253460-7	FLAT WASHER 13	1		
3	114	265B10-8	HEX BOLT M12X40	1		
3	115	136835-4	HEX. SLEEVE 20 ASS'Y	1		
3	115	263027-3	RUBBER PIN 4	1		
3	117	141H01-8	TIRE 210 ASSEMBLY	2		INC. 131-134,136-139
3	118	257498-4	RING 20	1		
3	121	136835-4	HEX. SLEEVE 20 ASS'Y	1		
3	121	263027-3	RUBBER PIN 4	1		

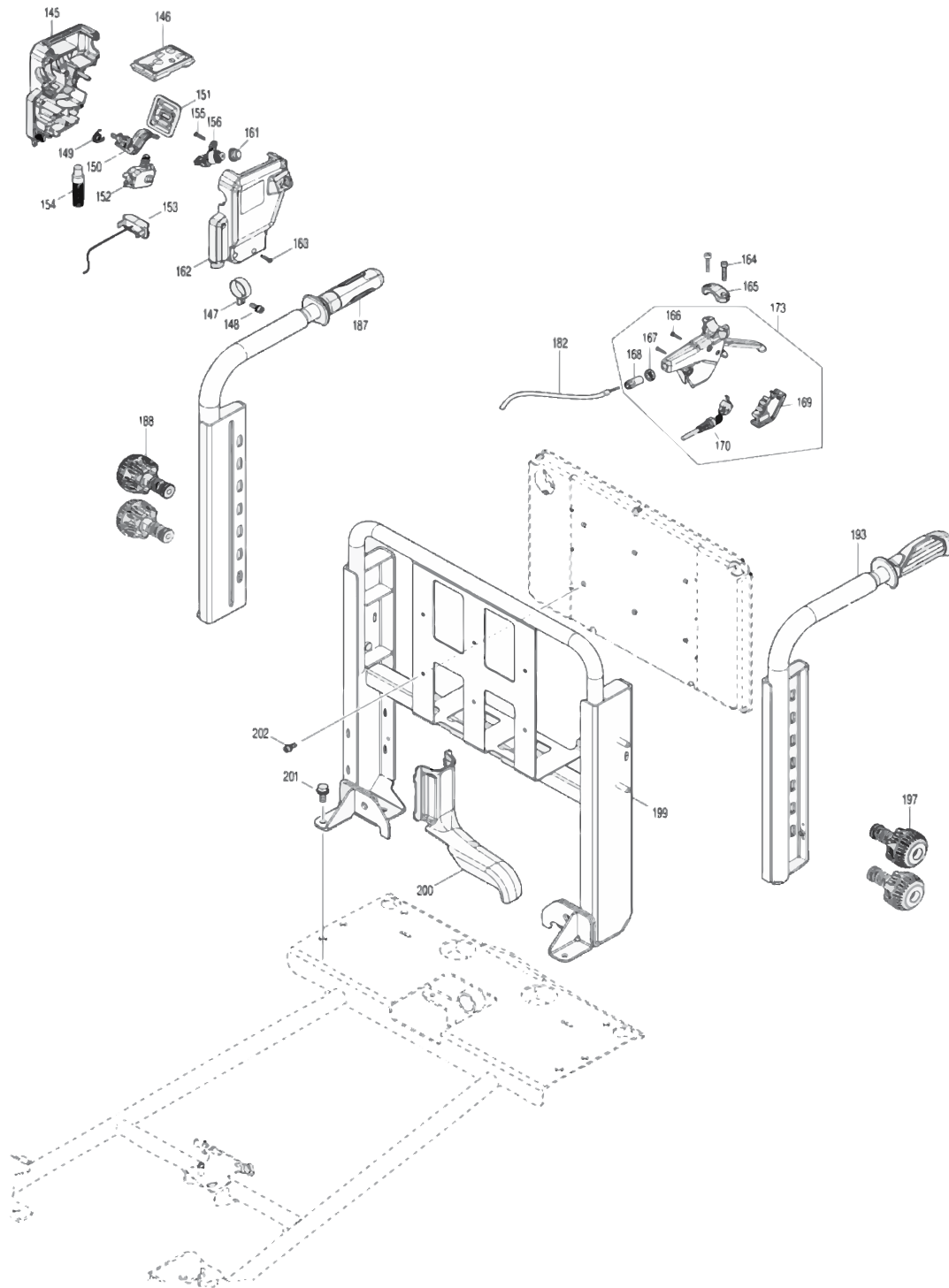
Products with multiple versions are listed in subsiding order with the newest version on top not indented.

Section	Fig. No.	Part No.	Description	XUC04	Tech Bulletin	Notes
3	122	127457-1	CASTER 210 ASSEMBLY	2		INC. 106,107,109,112-115, 117,118,121
3	123	265C39-0	HEX. FLANGE HD. BOLT M6X16	8		
3	131	265C40-5	HEX. BOLT M8X20	4		
3	132	253552-2	FLAT WASHER 8	4		
3	133	347952-7	WHEEL 100	1		
3	134	422860-4	TIRE 210	1		
3	136	162B40-9	TUBE 210	1		
3	136	GQ00000001	VALVE CAP M8	1		
3	137	347951-9	WHEEL 100	1		
3	138	253552-2	FLAT WASHER 8	4		
3	139	252309-8	HEX. NUT M8-13	4		



Products with multiple versions are listed in subsiding order with the newest version on top not indented.

Section	Fig. No.	Part No.	Description	XUC04	Tech Bulletin	Notes
4	42	141G99-9	TIRE 330 R ASSEMBLY	1		INC. 123-126,128-130
4	44	141H00-0	TIRE 330 L ASSEMBLY	1		INC. 48-54
4	48	265C39-0	HEX. FLANGE HD. BOLT M6X16	8		
4	49	347950-1	WHEEL 150	1		
4	50	422857-3	TIRE 330	1		
4	51	162B39-4	TUBE 330	1		
4	51	GQ00000001	VALVE CAP M8	1		
4	52	347949-6	WHEEL 150	1		
4	53	253551-4	FLAT WASHER 6	8		
4	54	252308-0	HEX. NUT M6-10	8		
4	124	347950-1	WHEEL 150	1		
4	125	422857-3	TIRE 330	1		
4	126	162B39-4	TUBE 330	1		
4	126	GQ00000001	VALVE CAP M8	1		
4	128	347949-6	WHEEL 150	1		
4	129	253551-4	FLAT WASHER 6	8		
4	130	252308-0	HEX. NUT M6-10	8		



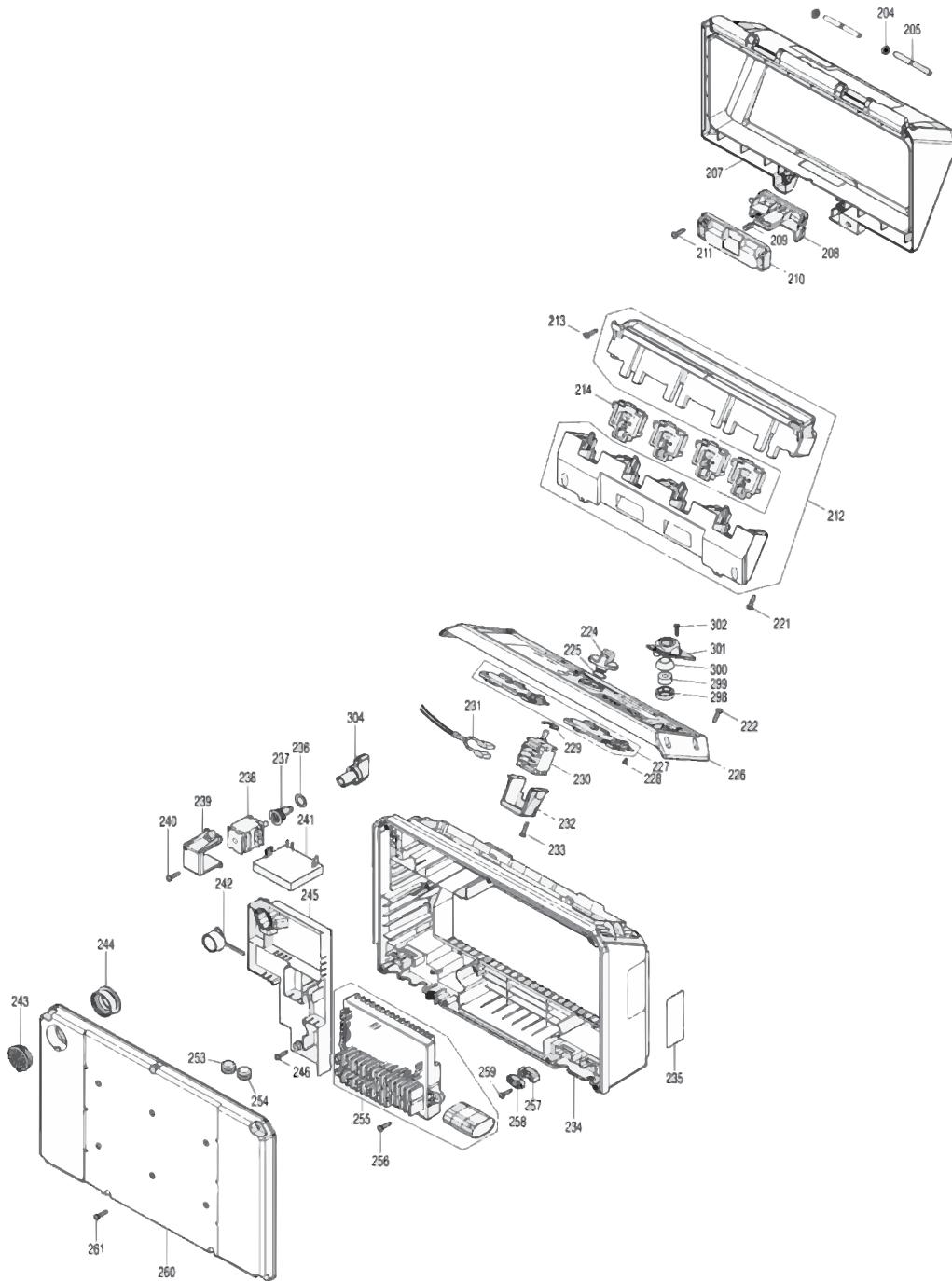


Products with multiple versions are listed in subsiding order with the newest version on top not indented.

Section	Fig. No.	Part No.	Description	XUC04	Tech Bulletin	Notes
5	145	183X90-3	SWITCH BOX SET	1		
5	145	8065A9-5	CAUTION LABEL	1		INC. 162
5	146	140P26-7	SWITCH CIRCUIT COMPLETE	1		
5	146	183X57-1	SWITCH PLATE SET	1		
5	146	266490-9	TAPPING SCREW PT 2X6	3		
5	147	346249-1	PIPE CLAMP 28	1		
5	148	265A97-4	H.S.H.BOLT M5X16 WITH WR	1		
5	149	232738-1	TORSION SPRING 11	1		
5	150	412206-2	SWITCH LEVER	1		
5	151	422554-1	LEVER COVER	1		
5	152	651395-0	SWITCH C3JW-6B-PA6N	1		
5	153	620C26-0	LED CIRCUIT	1		
5	154	699178-0	POWER SUPPLY CORD UNIT	1		
5	155	266130-9	TAPPING SCREW BIND PT 3X16	2		
5	156	122C26-1	BUZZER SWITCH ASSEMBLY	1		
5	156	632T14-7	SWITCH UNIT	1		
5	161	422555-9	SWITCH COVER	1		
5	162	183X90-3	SWITCH BOX SET	1		
5	163	266130-9	TAPPING SCREW BIND PT 3X16	6		
5	164	265C98-4	HEX SOCKET HEAD BOLT M5X25	2		
5	165	312C48-1	CLAMP 22	1		
5	166	266130-9	TAPPING SCREW BIND PT 3X16	2		
5	167	312C44-9	ADJUST NUT	1		
5	168	312C43-1	ADJUST BOLT	1		
5	169	413D25-3	SWITCH HOLDER	1		
5	170	632T13-9	SWITCH UNIT	1		
5	173	127458-9	BRAKE LEVER ASSEMBLY	1		INC. 166-170
5	182	140P23-3	BRAKE CABLE 1590	1		
5	187	140T47-3	HANDLE R COMPLETE	1		
5	188	141H20-4	HANDLE LOCK KNOB	2		
5	188	232739-9	COMPRESSION SPRING 15	2		
5	188	313400-8	SPRING HOLDER	2		
5	193	140P15-2	HANDLE L COMPLETE	1		
5	197	141H20-4	HANDLE LOCK KNOB	2		

Products with multiple versions are listed in subsiding order with the newest version on top not indented.

Section	Fig. No.	Part No.	Description	XUC04	Tech Bulletin	Notes
5	197	232739-9	COMPRESSION SPRING 15	2		
5	197	313400-8	SPRING HOLDER	2		
5	199	141N97-5	HANDLE BASE COMPLETE	1		
5	199	8059G2-2	INDICATION LABEL	1		
5	200	412562-0	HANDLE BASE COVER	1		
5	201	265B11-6	HEX. BOLT M8X20 WITH WR	4		
5	202	265A96-6	H.S.H.BOLT M5X14 WITH WR	6		

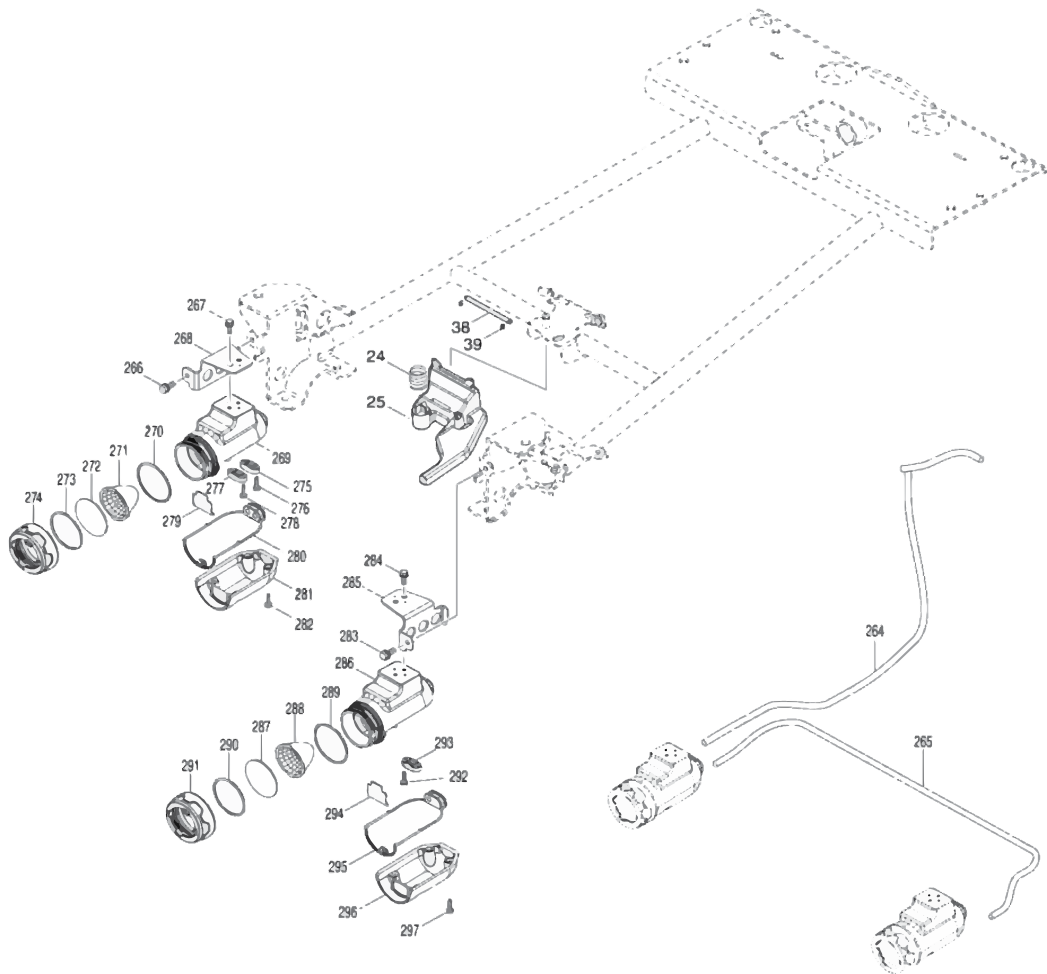


Products with multiple versions are listed in subsiding order with the newest version on top not indented.

Section	Fig. No.	Part No.	Description	XUC04	Tech Bulletin	Notes
6	204	262206-0	RUBBER RING 6	2		
6	205	256942-8	ROD 6	2		
6	207	141K02-4	BATTERY COVER COMPLETE	1		
6	207	8048W9-1	CAUTION LABEL	1		
6	207	8059G1-4	INDICATION LABEL	1		
6	207	816M70-5	INDICATION LABEL	1		
6	208	412195-1	BATTERY COVER HOOK	1		
6	209	231240-1	COMPRESSION SPRING 7	1		
6	210	412533-7	HOOK RETAINER	1		
6	211	266326-2	TAPPING SCREW 4X18	2		
6	212	183V34-1	TERMINAL CASE SET	1		
6		263005-3	RUBBER PIN 6	8		Inc w/212
6	213	266326-2	TAPPING SCREW 4X18	5		
6	214	644809-6	TERMINAL	4		
6	221	266326-2	TAPPING SCREW 4X18	5		
6	222	266326-2	TAPPING SCREW 4X18	4		
6	224	412196-9	CHANGE LEVER	1		
6	225	213A15-6	O-RING 14	1		
6	226	141L75-3	TOP COVER COMPLETE	1		
6	226	8048W3-3	INDICATION LABEL	1		
6	227	620C24-4	INDICATION CIRCUIT	1		
6	228	265C42-1	TAPPING SCREW 3X6	10		
6	229	961062-2	STOP RING E-12	1		
6	230	651444-3	SWITCH 1703.4703	1		
6	231	638A27-2	LEAD UNIT	1		
6	232	451343-7	SWITCH HOLDER	1		
6	233	266326-2	TAPPING SCREW 4X18	2		
6	234	412188-8	CENTER CASE	1		
6	235	8118K3-2	XUC04 NAME PLATE	1		
6	236	213A15-6	O-RING 14	1		
6	237	413D29-5	KEY JOINT	1		
6	238	650622-2	SWITCH	1		
6	239	451343-7	SWITCH HOLDER	1		

Products with multiple versions are listed in subsiding order with the newest version on top not indented.

Section	Fig. No.	Part No.	Description	XUC04	Tech Bulletin	Notes
6	240	266326-2	TAPPING SCREW 4X18	2		
6	241	620G67-0	CONTROLLER	1		
6	242	620C25-2	BUZZER CIRCUIT	1		
6	243	413D35-0	BUZZER COVER	1		
6	244	422840-0	GROMMET	1		
6	245	412194-3	INNER CASE	1		
6	246	266326-2	TAPPING SCREW 4X18	2		
6	253	682114-3	GROMMET	1		
6	254	682114-3	GROMMET	1		
6	255	620D13-5	CONTROLLER	1		
6	256	266326-2	TAPPING SCREW 4X18	2		
6	257	687051-6	STRAIN RELIEF	1		
6	258	687124-5	STRAIN RELIEF	1		
6	259	266326-2	TAPPING SCREW 4X18	2		
6	260	412190-1	FRONT COVER	1		
6	261	266326-2	TAPPING SCREW 4X18	7		
6	298	413D37-6	LEVEL CASE	1		
6	299	242101-0	LEVEL INDICATOR	1		
6	300	413D36-8	LEVEL COVER	1		
6	301	413D38-4	LEVEL RETANER	1		
6	302	266130-9	TAPPING SCREW BIND PT 3X16	2		
6	304	413D30-0	KEY	1		



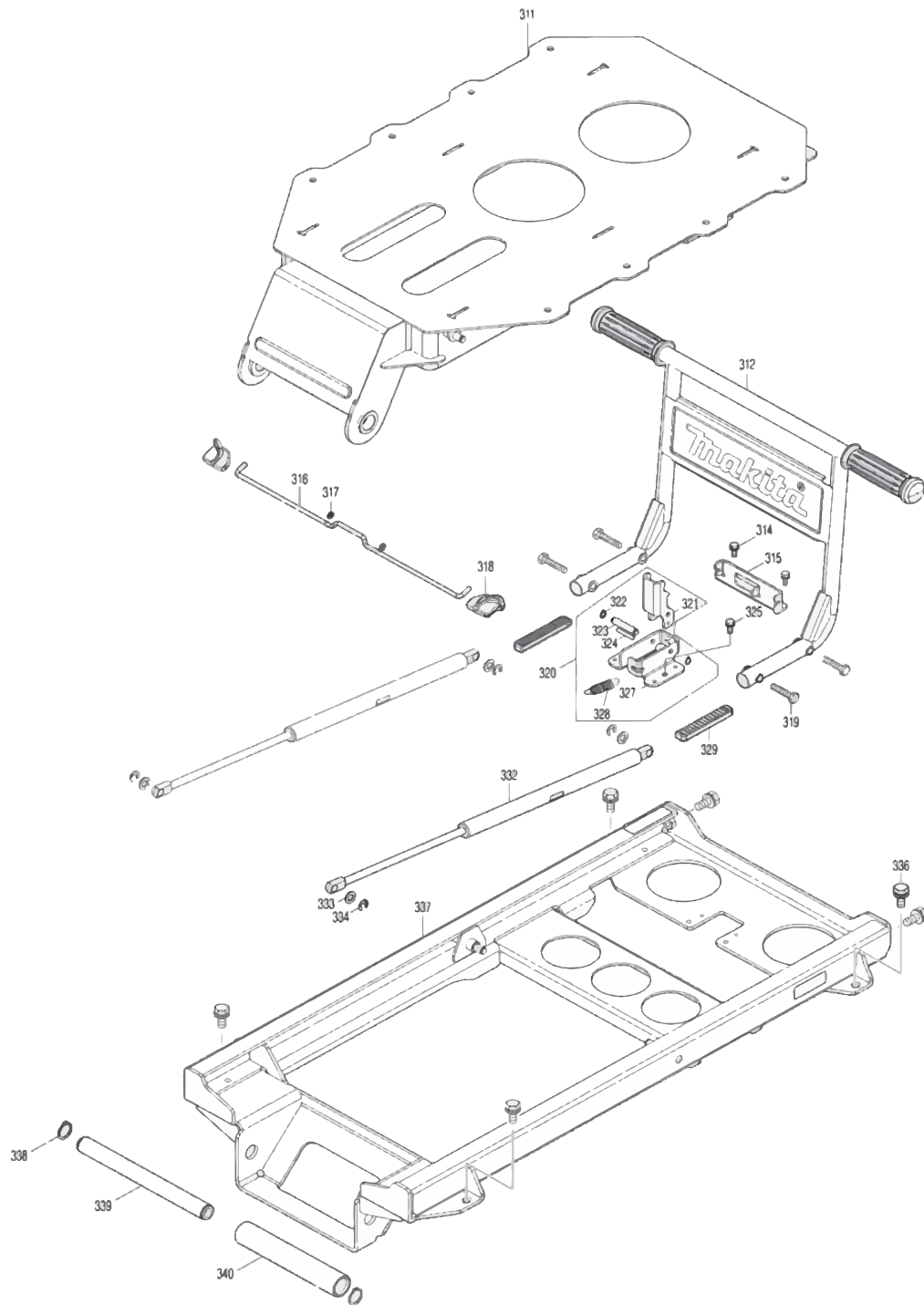
Products with multiple versions are listed in subsiding order with the newest version on top not indented.

Section	Fig. No.	Part No.	Description	XUC04	Tech Bulletin	Notes
7	24	232737-3	COMPRESSION SPRING 19	1		
7	25	413D27-9	NEUTRAL LEVER LOCK	1		
7	38	256A03-0	ROD 4.5	1		
7	39	961017-7	STOP RING E-3	2		
7	264	699180-3	POWER SUPPLY CORD UNIT	1		
7	265	699181-1	POWER SUPPLY CORD UNIT	1		
7	266	265B16-6	HEX. BOLT M6X16 WITH WR	1		
7	267	265B17-4	HEX. BOLT M5X16 WITH WR	2		
7	268	347622-8	LIGHT STAY R	1		
7	269	319594-7	LIGHT CASE	1		
7	270	213656-2	O RING 53	1		
7	271	457636-0	REFLECTOR	1		
7	272	457634-4	LENS	1		
7	273	213604-1	O RING 50	1		
7	274	457635-2	COVER	1		
7	275	687124-5	STRAIN RELIEF	1		
7	276	266034-5	TAPPING SCREW CT 4X16	2		
7	277	687124-5	STRAIN RELIEF	1		
7	278	266034-5	TAPPING SCREW CT 4X16	2		
7	279	620685-2	LED CIRCUIT	1		
7	280	422151-3	PACKING	1		
7	281	319595-5	LIGHT CASE COVER	1		
7	282	266034-5	TAPPING SCREW CT 4X16	4		
7	283	265B16-6	HEX. BOLT M6X16 WITH WR	1		
7	284	265B17-4	HEX. BOLT M5X16 WITH WR	2		
7	285	347623-6	LIGHT STAY L	1		
7	286	319594-7	LIGHT CASE	1		
7	287	457634-4	LENS	1		
7	288	457636-0	REFLECTOR	1		
7	289	213656-2	O RING 53	1		
7	290	213604-1	O RING 50	1		
7	291	457635-2	COVER	1		
7	292	266034-5	TAPPING SCREW CT 4X16	2		

Products with multiple versions are listed in subsiding order with the newest version on top not indented.

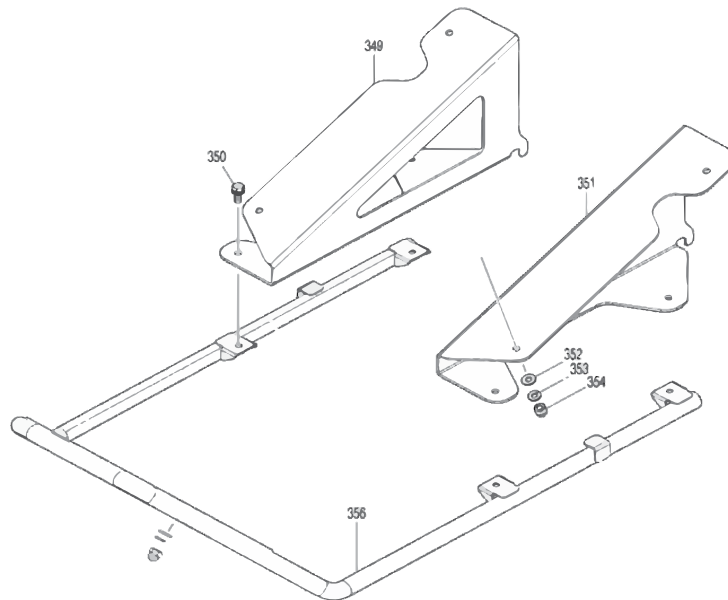
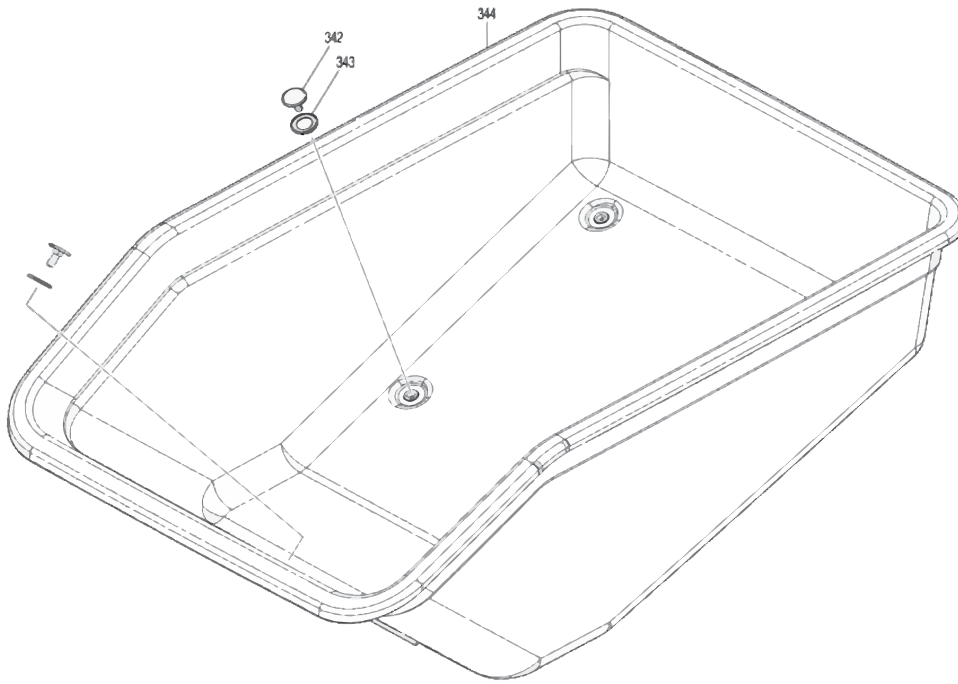
Section	Fig. No.	Part No.	Description	XUC04	Tech Bulletin	Notes
7	293	687124-5	STRAIN RELIEF	1		
7	294	620685-2	LED CIRCUIT	1		
7	295	422166-0	PACKING	1		
7	296	319595-5	LIGHT CASE COVER	1		
7	297	266034-5	TAPPING SCREW CT 4X16	4		





Products with multiple versions are listed in subsiding order with the newest version on top not indented.

Section	Fig. No.	Part No.	Description	XUC04	Tech Bulletin	Notes
8	311	162717-4	UPPER FRAME	1		
8	312	140P16-0	DUMP HANDLE COMPLETE	1		
8	312	8048W5-9	MAKITA LOGO LABEL	1		
8	314	265B16-6	HEX. BOLT M6X16 WITH WR	2		
8	315	347628-6	HOLDER	1		
8	317	941102-2	FLAT WASHER 5	2		
8	318	412197-7	KNOB	2		
8	319	921461-0	HEX. BOLT M8X40	4		
8	320	122C30-0	DUMP LOCK ASSEMBLY	1		INC. 321-324,327,328
8	321	347626-0	ARM	1		
8	322	961004-6	RETAINING RING (EXT) S-8	2		
8	323	256943-6	PIN 8	1		
8	324	256196-7	PIN 5	1		
8	325	265B16-6	HEX. BOLT M6X16 WITH WR	2		
8	327	347627-8	BASE	1		
8	328	232618-1	TENSION SPRING 11	1		
8	329	422556-7	CUSHION RUBBER	2		
8	332	162816-2	GAS SPRING 240	2		
8	333	941252-3	FLAT WASHER 10	4		
8	334	961014-3	STOP RING E-8	4		
8	336	265508-3	HEX.BOLT M10X25	6		
8	337	141N98-3	DUMP BASE COMPLETE	1		
8	338	961102-6	RETAINING RING S-22	2		
8	339	327474-3	SHAFT 22	1		
8	340	327480-8	SLEEVE 22	1		



Products with multiple versions are listed in subsiding order with the newest version on top not indented.

Section	Fig. No.	Part No.	Description	XUC04	Tech Bulletin	Notes
9	342	265B12-4	FLAT H. SQUARE NECK BOLT M8X24	6		
9	343	261164-7	RUBBER WASHER 20	6		
9	344	412198-5	DUMP BUCKET 200	1		
9	349	347624-4	BUCKET BASE R	1		
9	350	265B11-6	HEX. BOLT M8X20 WITH WR	4		
9	351	347625-2	BUCKET BASE L	1		
9	352	941201-0	FLAT WASHER 8	6		
9	353	942201-3	SPRING WASHER 8	6		
9	354	252278-3	HEX. CAP NUT M8	6		
9	356	141N86-0	BUCKET GUARD COMPLETE	1		
9		457744-7	CAP 22	2		Not Pictured, included w/356